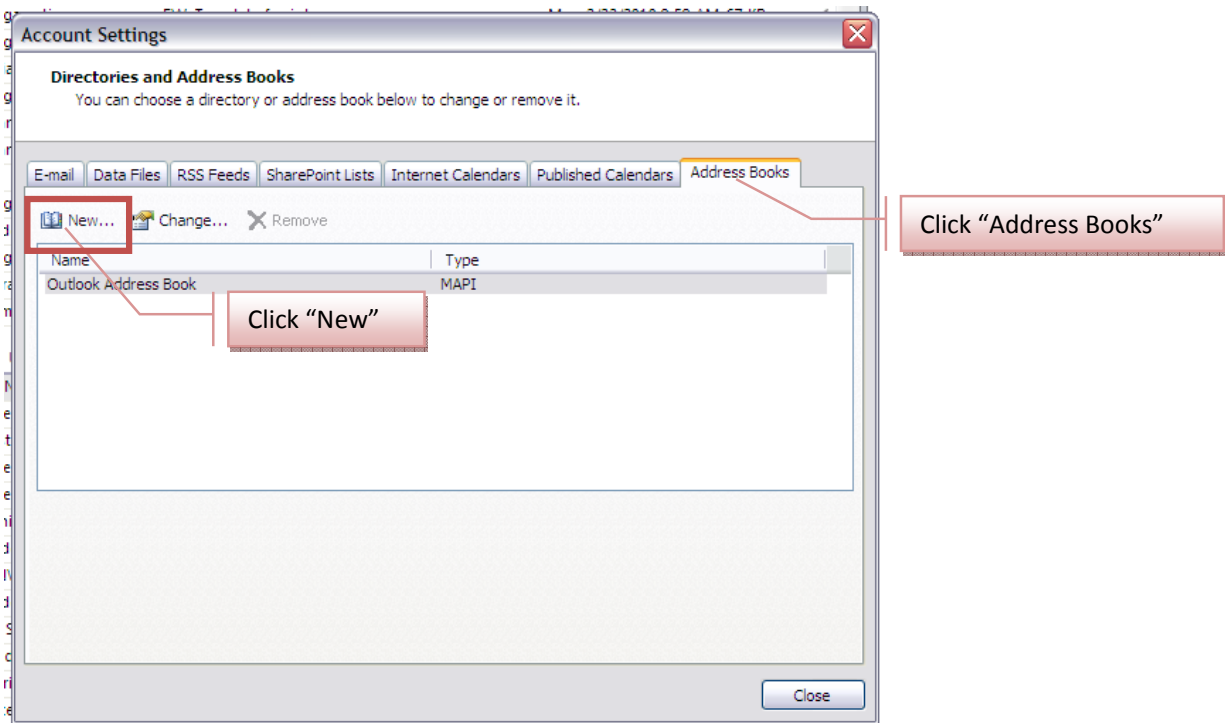
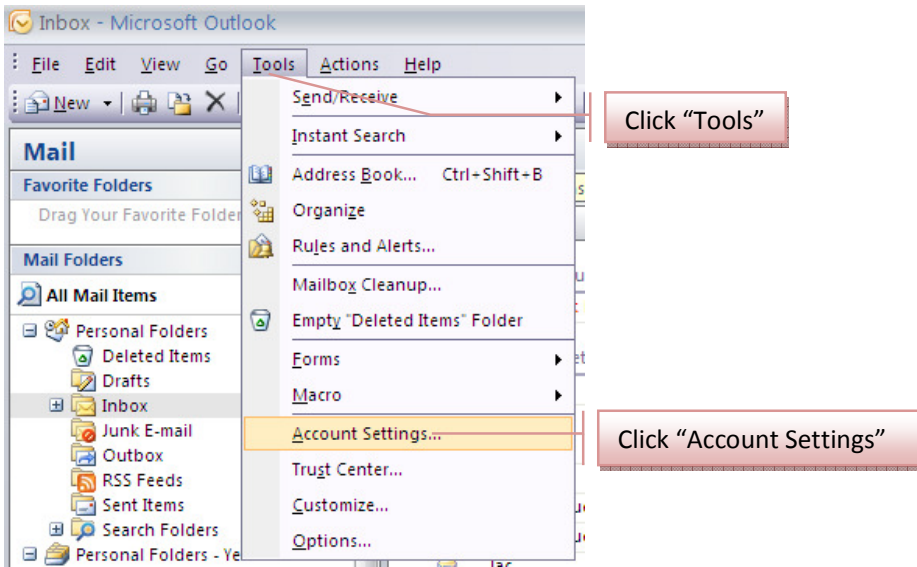
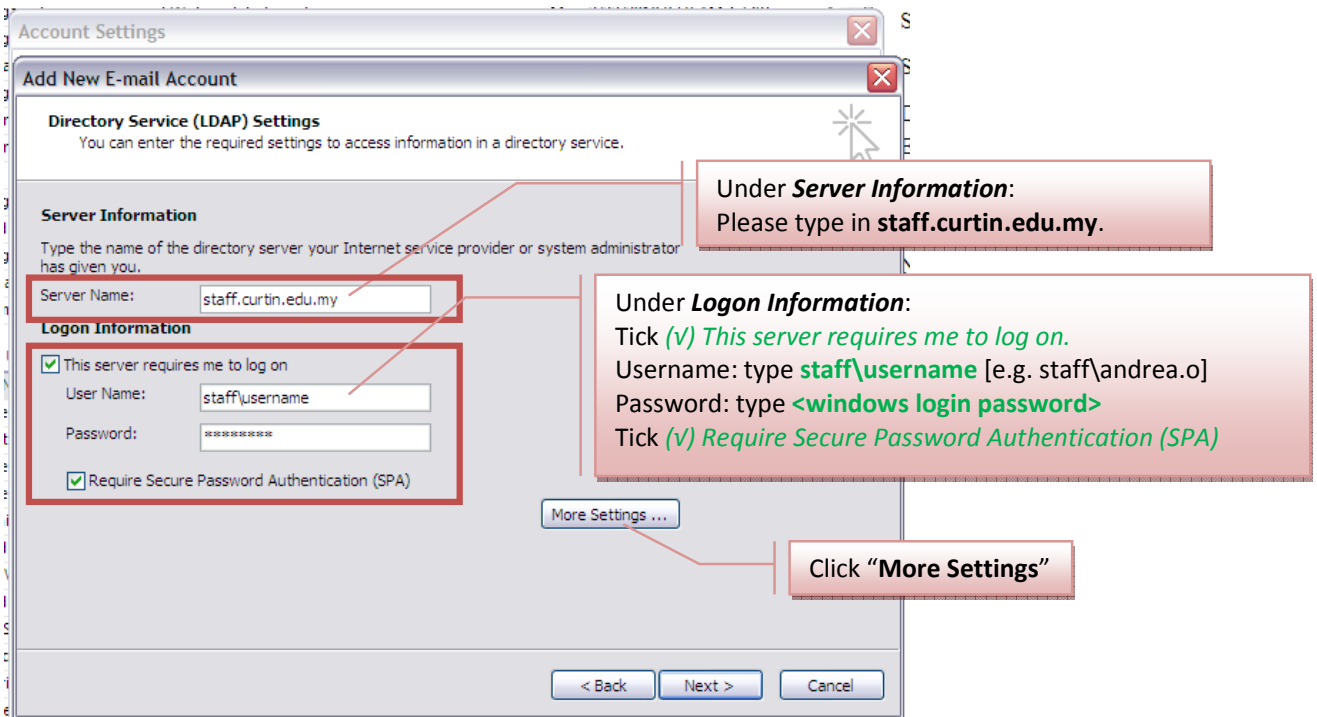
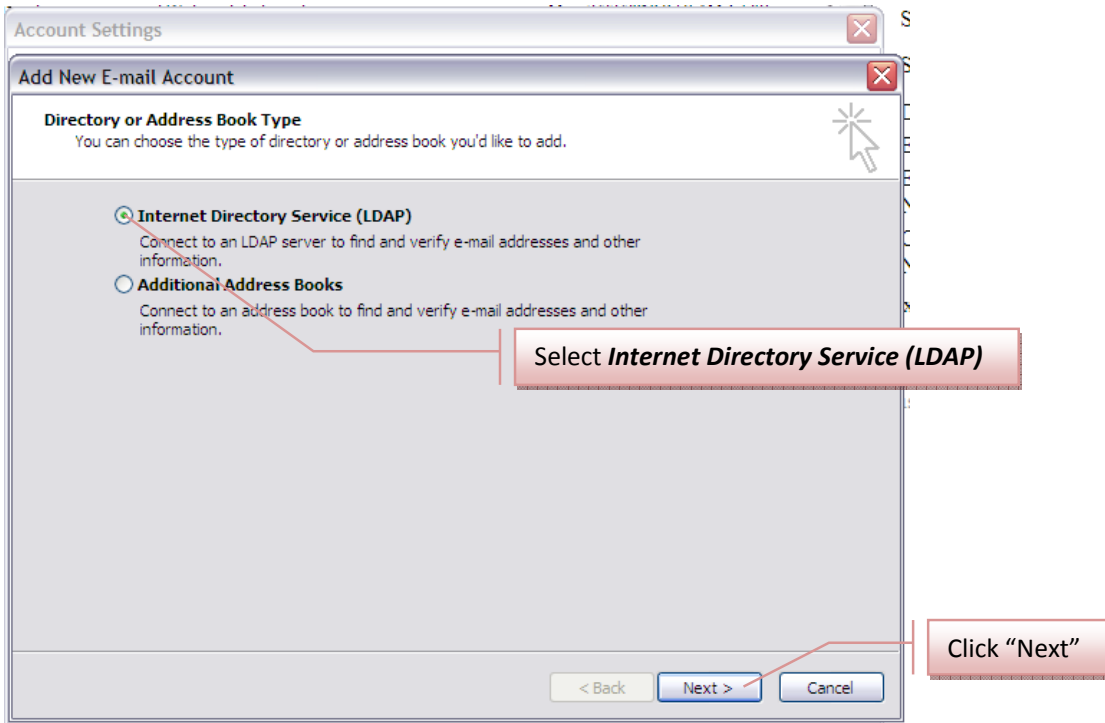


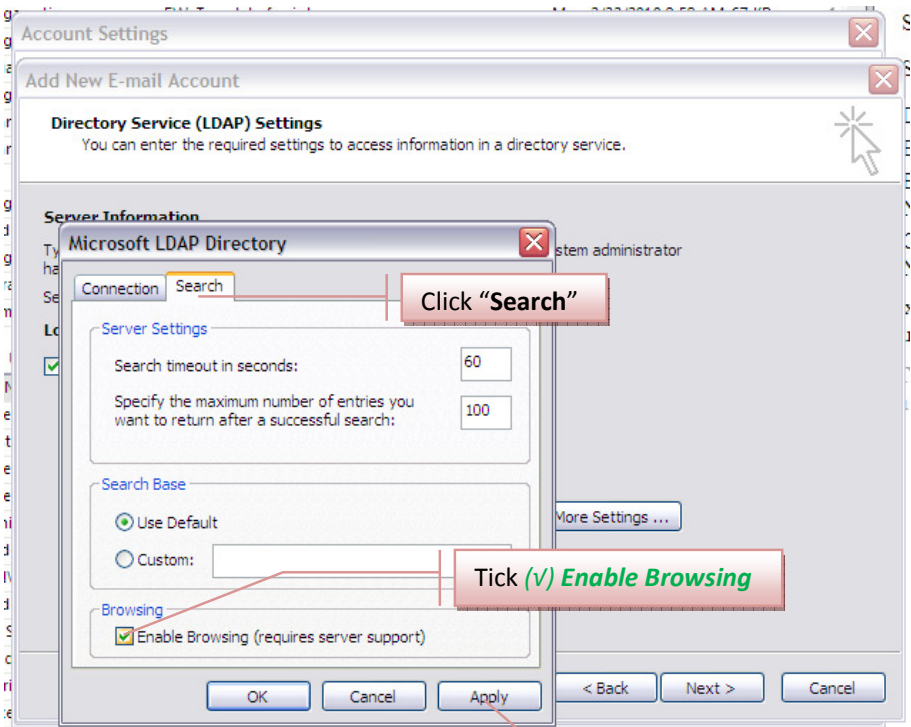
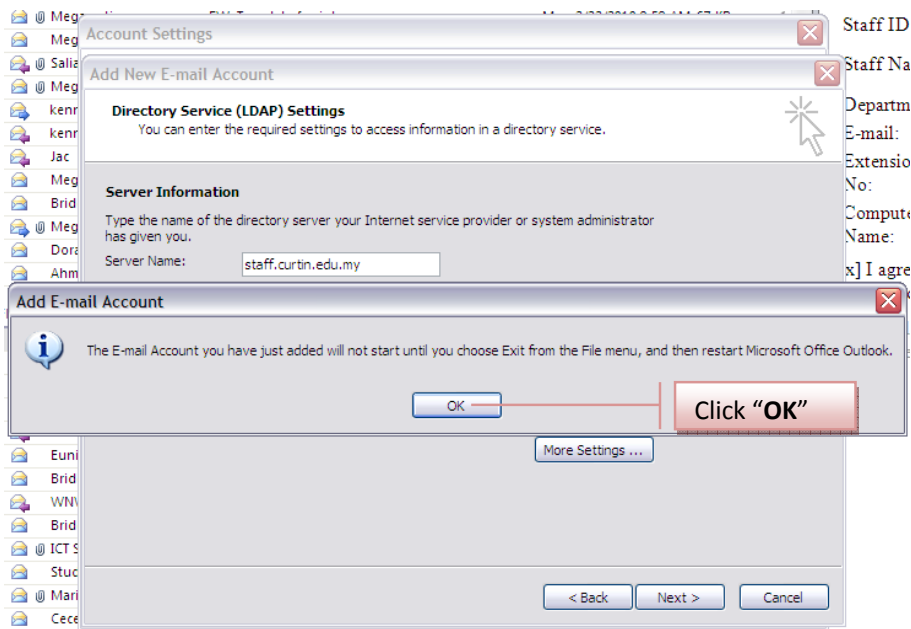
Steps to add the CSM Email Directory in Microsoft Outlook 2007



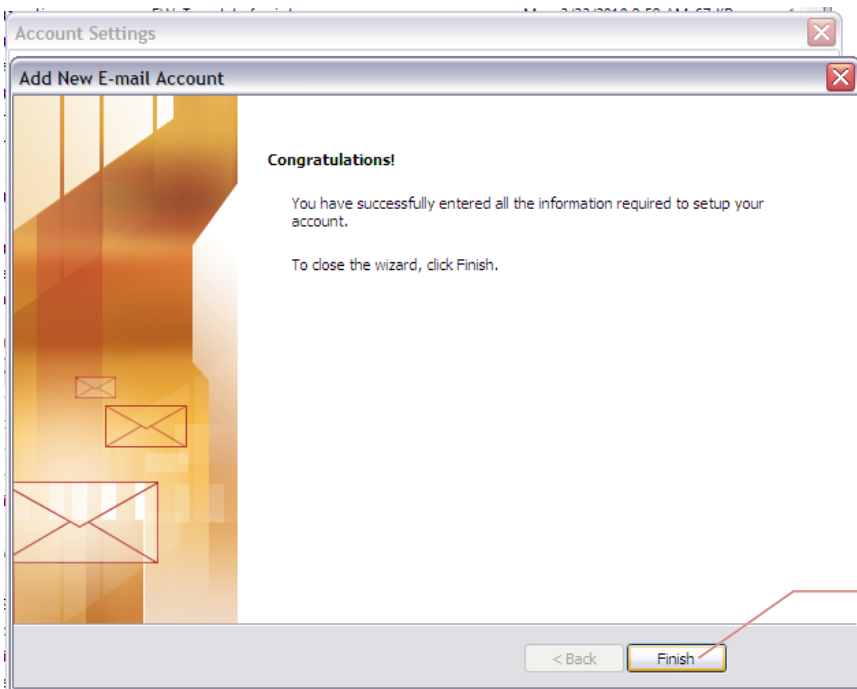
Steps to add the CSM Email Directory in Microsoft Outlook 2007



Steps to add the CSM Email Directory in Microsoft Outlook 2007



Steps to add the CSM Email Directory in Microsoft Outlook 2007



After your click "Next", then click "Finish".

IMPORTANT: Once the Email Staff Directory has been added under your Address Books, please CLOSE your Outlook & OPEN it again. To check if you have added the directory successfully, open a new message & click "To" button & you should able to see all the CSM email addresses.