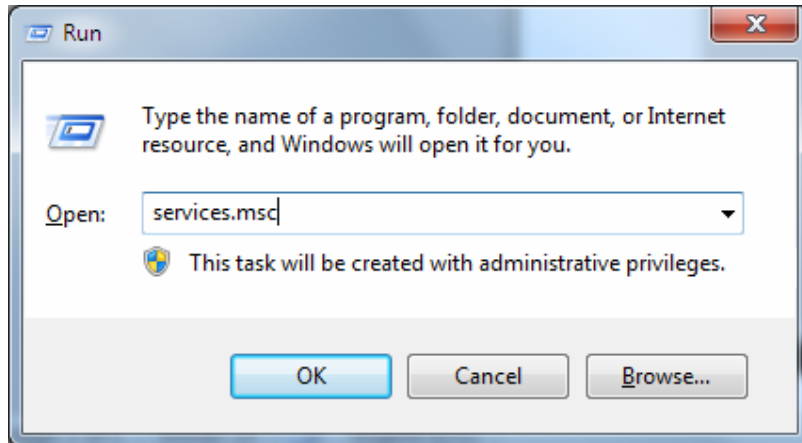


## Connection for Flat A,B,C,D,E, & F (Lambir, Niah, & Mulu, Sibuti, Similajau & Loagan Bunut)

### How To: Setup Hostel's Wired Connection (Windows Vista/7)

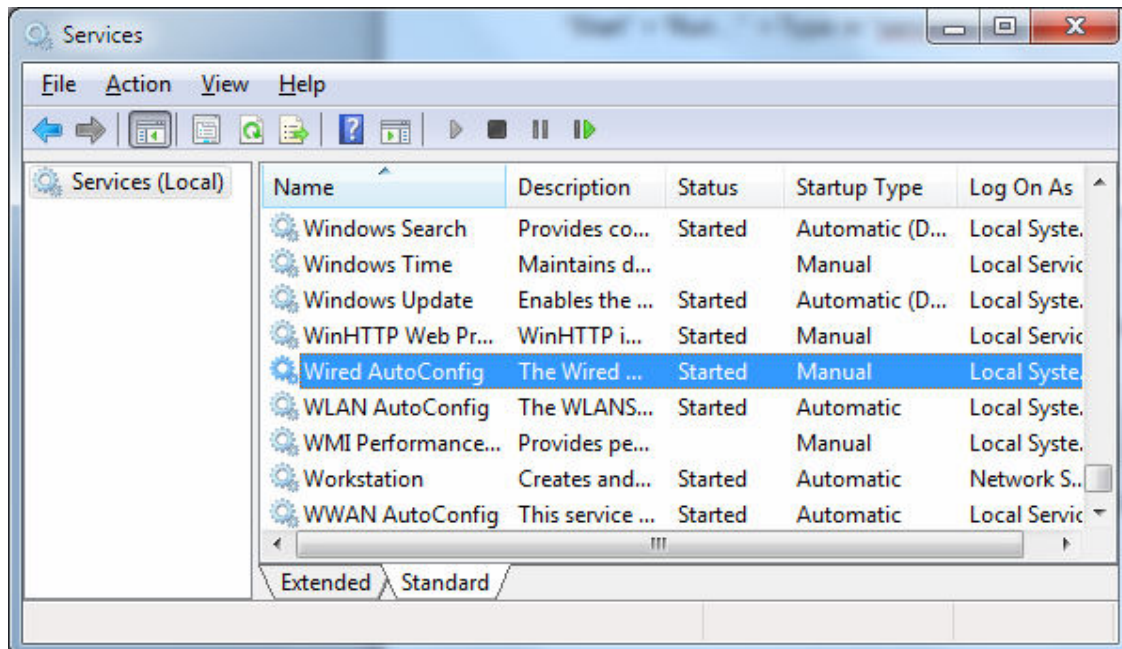
Go to:

1. "Start" > "Run..." > Type in "services.msc" in the "Open:" field > Click "OK"

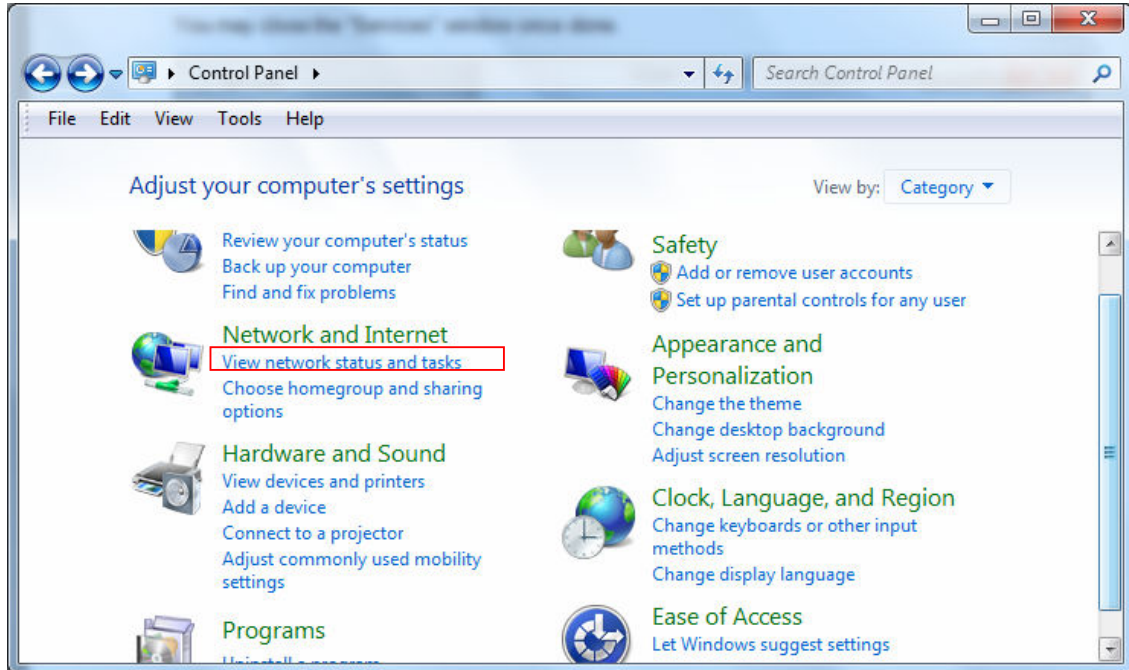


2. Make sure "Wired AutoConfig" service is switched on, i.e. the status should show "Started". Otherwise, right-click on "Wired AutoConfig" and click "Start" to switch on the service.

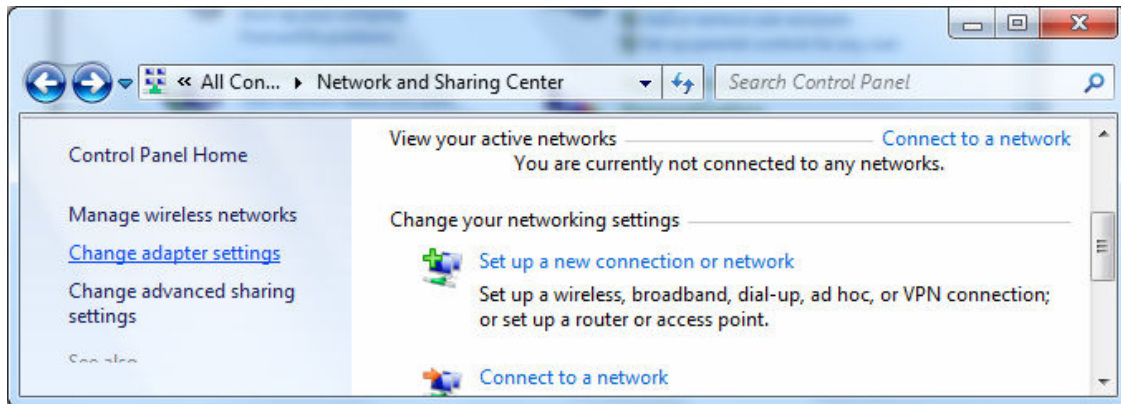
You may close the "Services" window once done.



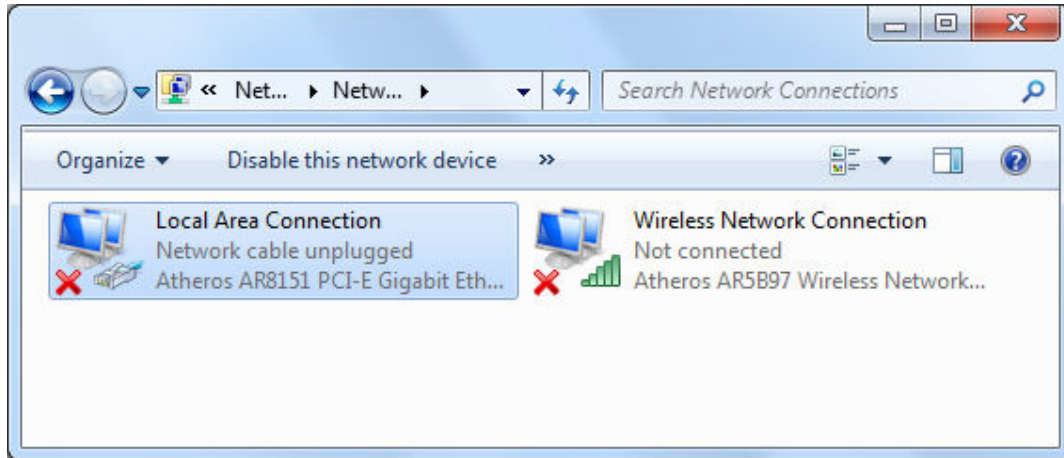
3. Go to "Control Panel" (View by: Category).
4. Click "View network status and tasks".



5. On the left-hand column, click "Change adapter settings".

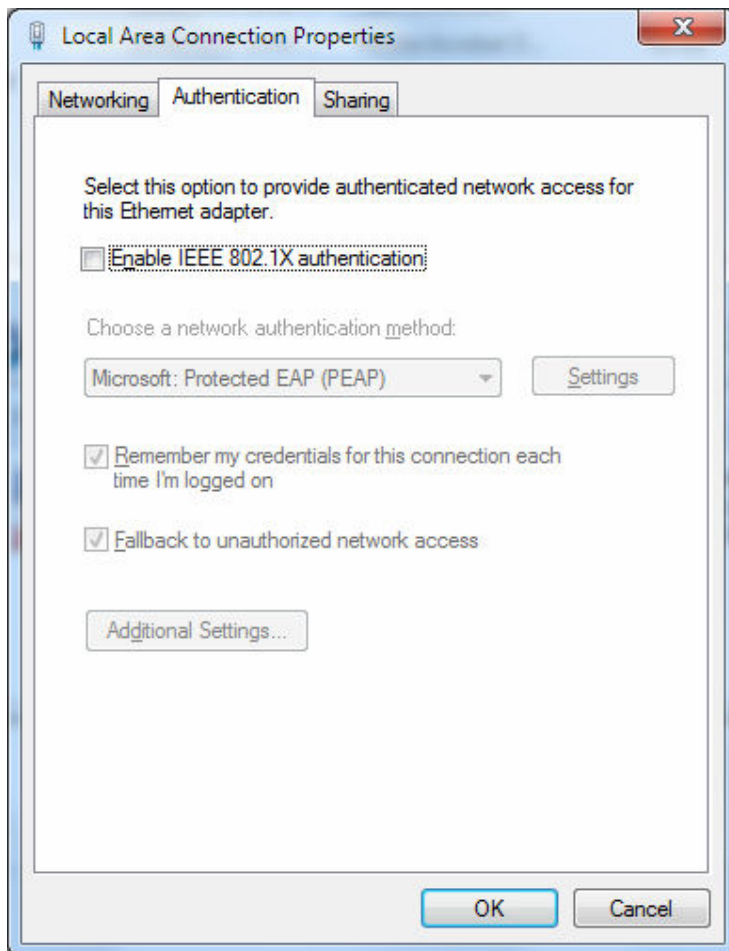


6. Right-click on “Local Area Connection”, click “Properties”.



7. Go to the “Authentication” tab. Check only the checkboxes as shown below, and select “Microsoft: Protected EAP (PEAP)” from the menu. Then click “Settings” button.

8. **Uncheck** the “Enable IEEE 802.1X authentication” check box. Then click “OK” to proceed.

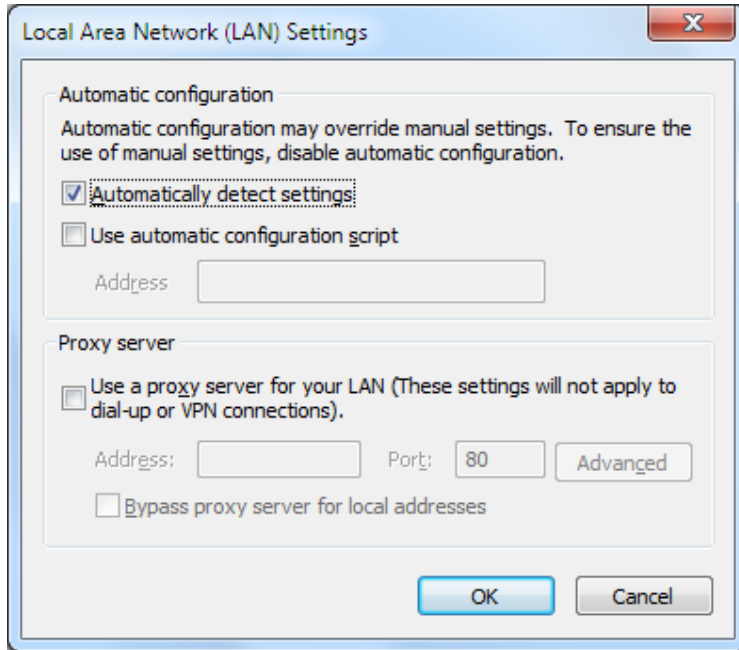


9. Go to your browser (e.g. Internet Explorer, Mozilla Firefox, Opera) and remove the proxy setting.

Internet Explorer:

“Tools” > “Internet Options” > “Connections” Tab > “LAN Settings”

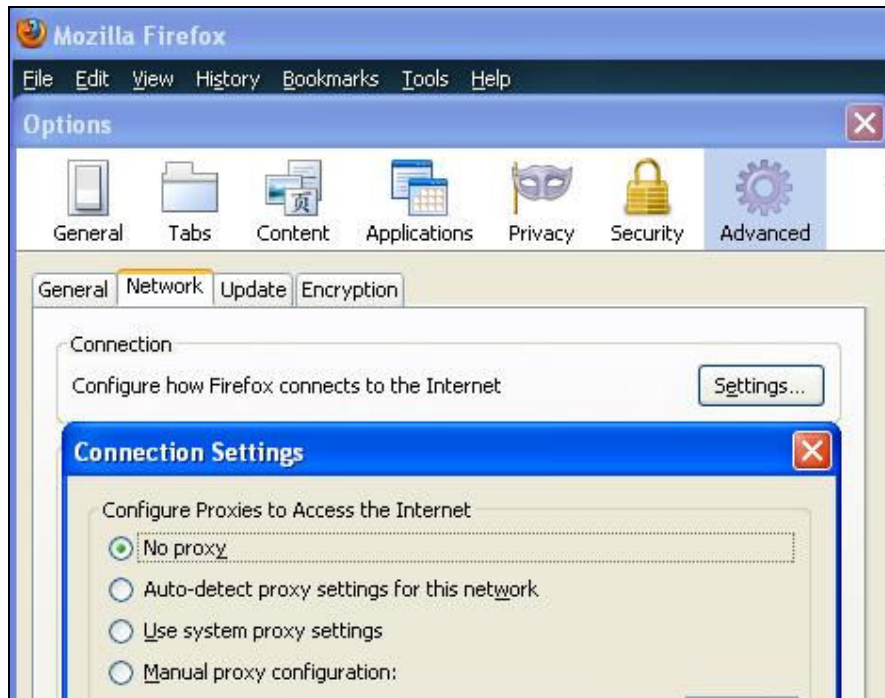
Select “Automatically detect settings” and uncheck the other checkboxes > “OK”



Mozilla Firefox:

“Tools” > “Options” > “Network” Tab > “Settings...”

Select “No proxy” > “OK”



Opera:

“Menu” > “Settings” > “Preferences...” > “Advanced” > “Network” > “Proxy servers”

Ensure all checkboxes are *unchecked* > “OK”

