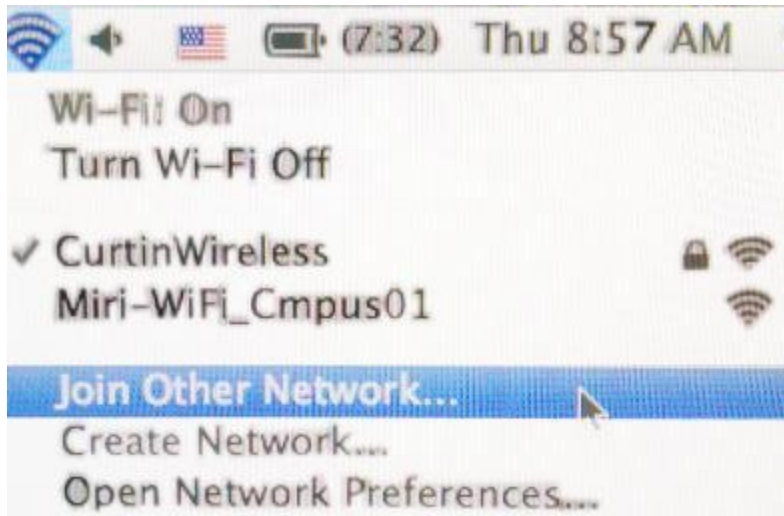


How To Connect To Curtin's Wireless Network (Mac OS Lion)



Pre-requisite: Turn On Wi-Fi

A. Go to "Join Other Network...":



B. Key in the following and click "Join":



How To Connect To Curtin's Wireless Network (Mac OS Lion)



C. Select the options accordingly and key in your Windows credential, then click "Join":

A screenshot of the Mac OS Lion Wi-Fi network selection dialog box. The title is "Find and join a Wi-Fi network." Below the title is a Wi-Fi icon and the instruction "Enter the name and security type of the network you want to join." The form contains the following fields: "Network Name:" with the text "CurtinWireless"; "Security:" with a dropdown menu showing "WEP Enterprise"; "Mode:" with a dropdown menu showing "Automatic"; "Username:" with the text "STUDENT\7E2A0001"; and "Password:" with a field containing seven dots. Below the password field are two checkboxes: "Show password" (unchecked) and "Remember this network" (checked). At the bottom left, there is a warning icon and the text "No network found." At the bottom right, there are three buttons: "Show Networks" (with a question mark icon), "Cancel", and "Join".

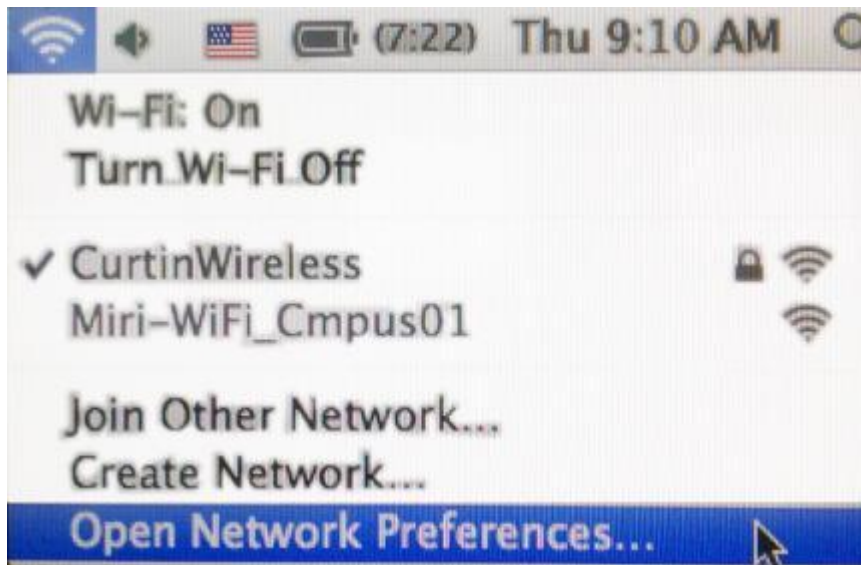
Key in your Curtin Windows Username and Password in the following format:

	STAFF	STUDENT
User name:	STAFF\john.doe	STUDENT\7E2A0001
Password:	Windows password for john.doe	Windows password for 7E2A0001

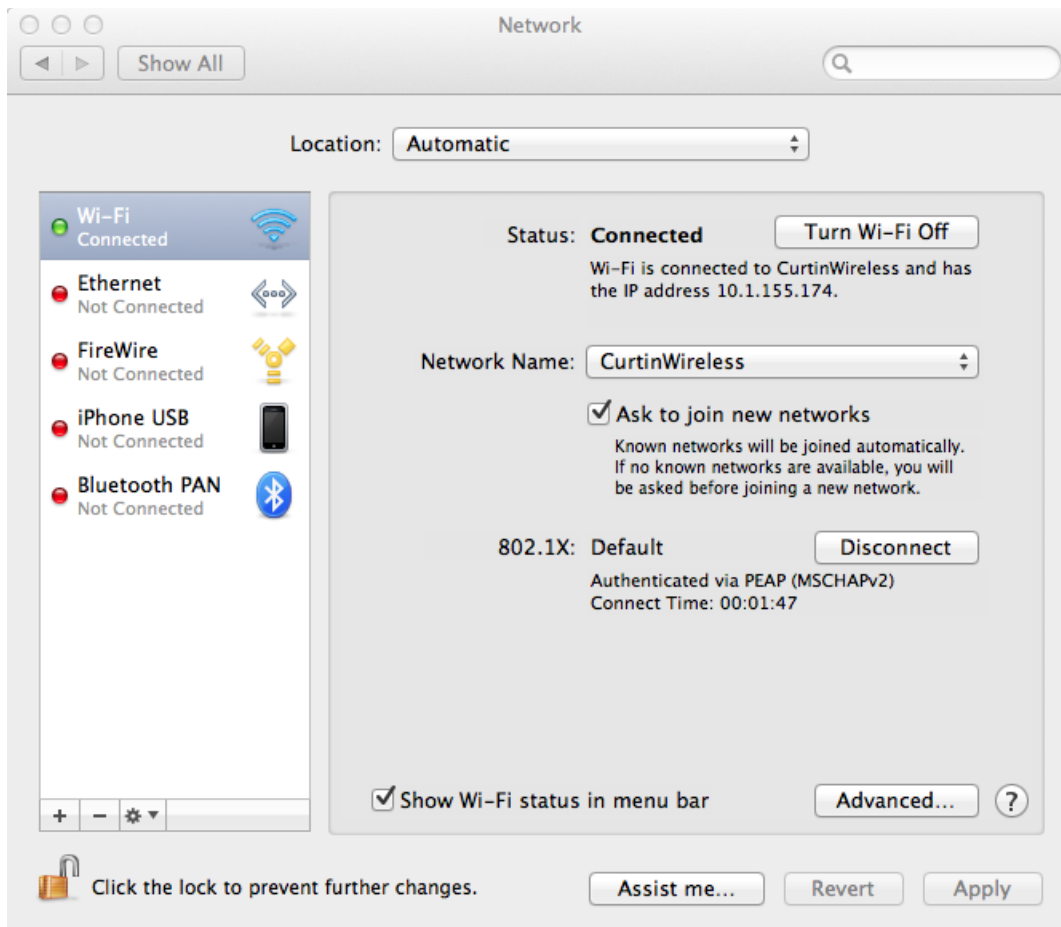
How To Connect To Curtin's Wireless Network (Mac OS Lion)



D. Go to “Open Network Preferences”:



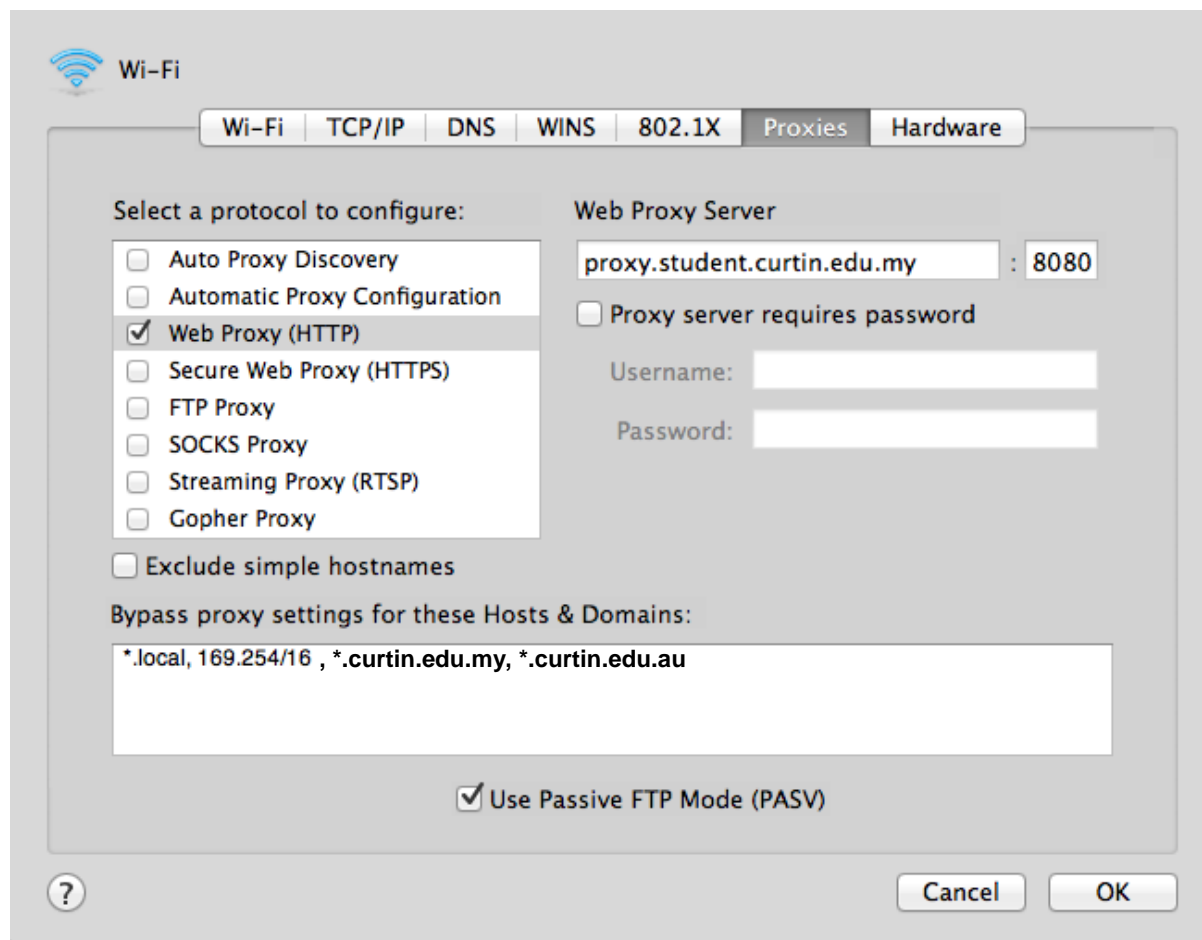
E. If your Wi-Fi connection status shows “Connected”, then click on “Advanced”:



How To Connect To Curtin's Wireless Network (Mac OS Lion)



F. Select “Proxies” and fill in the Web Proxy Server details as shown below and click “OK” to apply the setting:



Proxy server to use:

	Web Proxy Server	Proxy Port
STAFF	proxy1.staff.curtin.edu.my	8080
STUDENT	proxy.student.curtin.edu.my	8080

F. Important Notes

1. If your machine has Firewall and/or Anti-Virus services activated, it may prevent you from accessing the internet smoothly. Please fine-tune or turn off these services to test the connection if you find that your browser is unable to load a webpage.
2. You are connecting to the wireless network at your own risk.
3. Handheld devices with Wi-Fi features may not be supported.
4. Please read & understand the ICT Policies & Procedure available at: http://www.curtin.edu.my/sch_dept/ICT/policies/index.htm