



1. Certificates Installation

1.1 Installation of 'root.der':

1. Firstly, begin by installing the 'root.der' certificate.
 - Right-click on 'root.der', and choose 'Install Certificate'.
2. You shall now see the 'Welcome to the Certificate Import Wizard' dialog box.
 - Click 'Next >' to continue.
3. Choose 'Automatically select the certificate store based on the type of certificate'.
 - Click 'Next >' to continue.
4. Lastly, click 'Finish' to complete importing the 'root.der' certificate.

1.2 Installation of 'client.p12':

1. Now you may install 'client.p12' certificate.
 - Right-click on 'client.p12', and choose 'Install PFX'.
2. You shall now see the 'Welcome to the Certificate Import Wizard' dialog box.
 - Click 'Next >' to continue.
3. The location of 'client.p12' will be displayed.
 - Click 'Next >' to continue.
4. You shall now be prompted for the password for the private key.
 - Fill in the following in the password field: secretsnlies
 - Click 'Next >' to continue.
5. Choose 'Automatically select the certificate store based on the type of certificate'.
 - Click 'Next >' to continue.
6. Lastly, click 'Finish' to complete importing the 'client.p12' certificate.

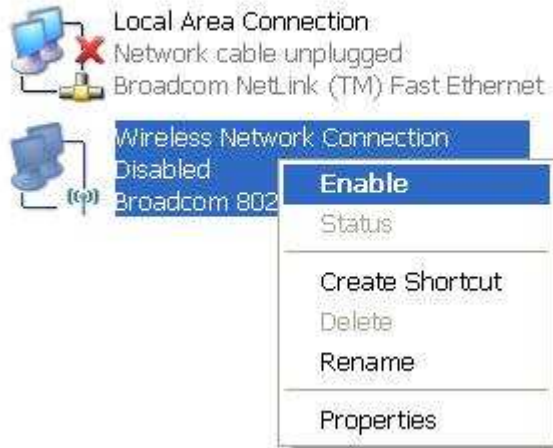
** Please refer to the appendix for the screen-capture as guidance.*



2. Configuration for 'CurtinWireless_AP' Wireless Network properties

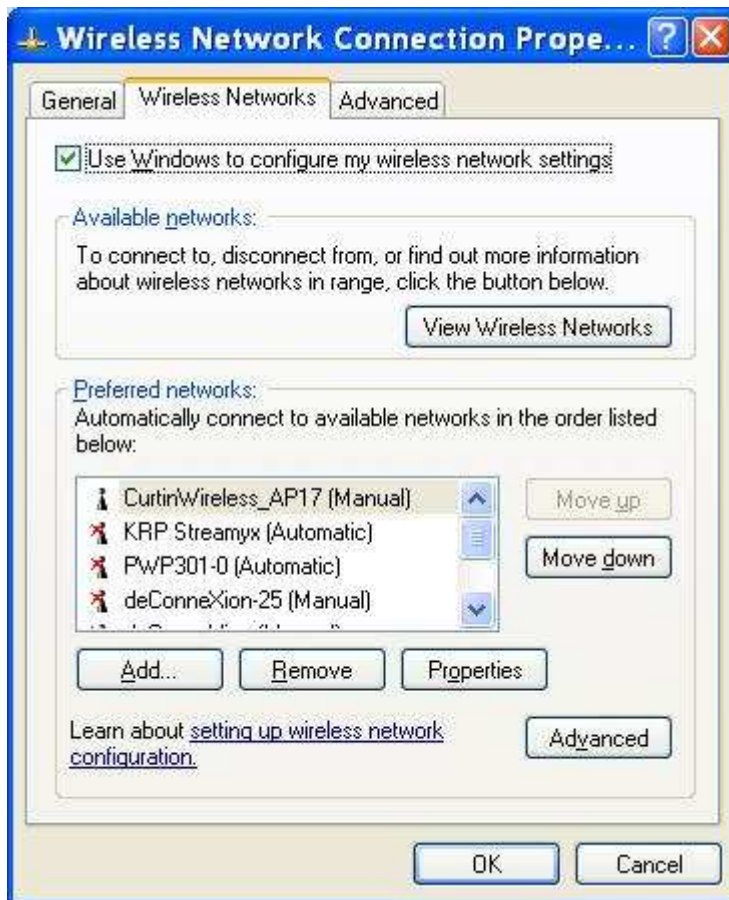
1. Go to 'Accessories' > 'Communications' > 'Network Connections'.
2. Ensure that your wireless network card is ENABLED.

LAN or High-Speed Internet



Then 'Right-click' on 'Wireless Network Connection' and select 'Properties'.

3. Wireless Networks Setting: Follow the exact settings as shown below.



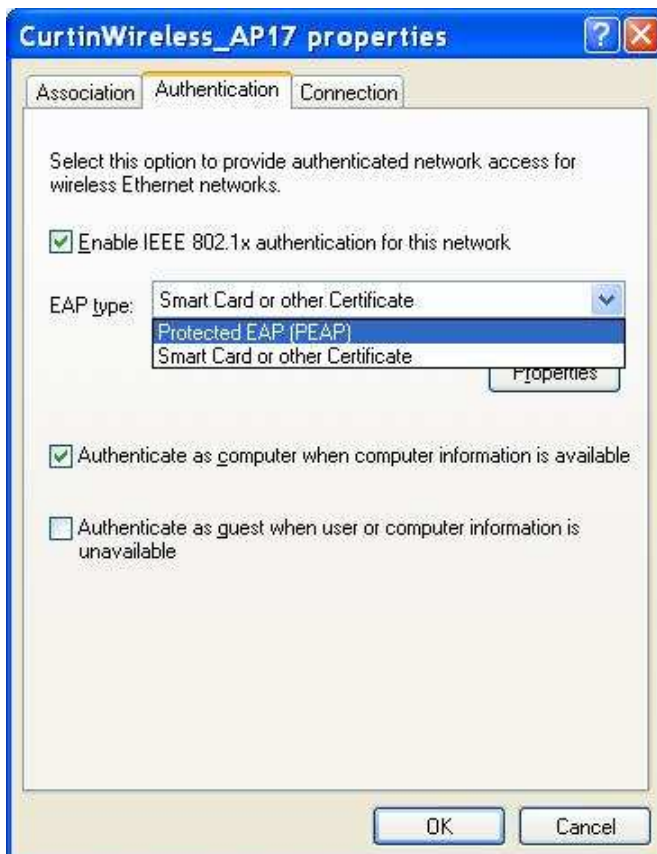
Select 'CurtinWireless_AP' and click the 'Properties' button.



4. Wireless Properties: Follow the exact settings as below.

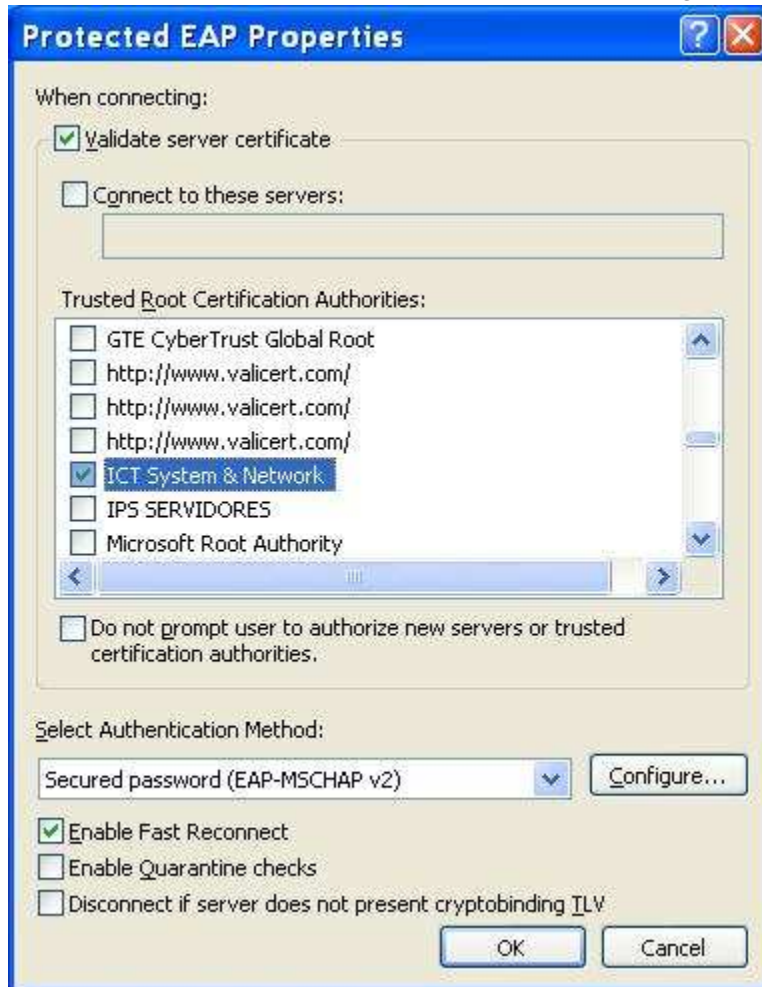


Next, click on 'Authentication Tab'.





5. Click 'Properties' button: Follow the exact settings as below.



Next, click on 'Configure... '.

6. You shall now ensure that the 'check box' below is cleared.

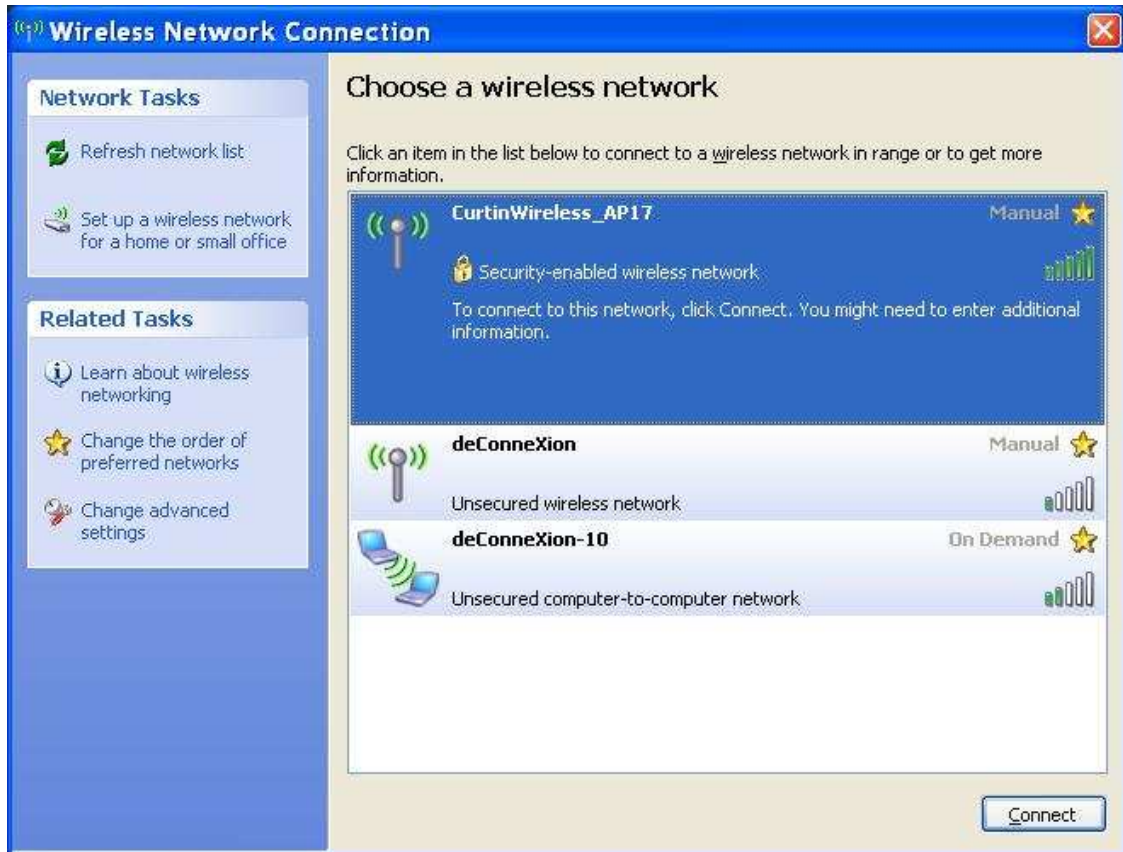


7. Click the 'OK' button all the way to apply the settings.

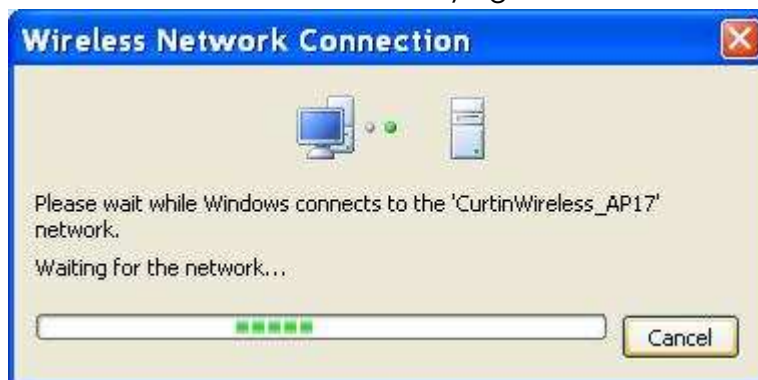


3. Connection to CurtinWireless_AP

1. Go to the 'Control Panel'.
2. Select 'Network and Sharing Center'.
3. Select 'Connect to a network'.
4. You should now see 'CurtinWireless_AP' in the list (if you are within the wireless range).
 - Select 'CurtinWireless_AP' and click 'Connect'.



5. You shall see wireless network trying to connect:



Click on the pop-up notice that informs you to authenticate your connection.

How To Connect To Curtin's Wireless Network (Win XP)



- You shall now be prompted to authenticate yourself for this WiFi connection:



Fill in your Curtin Sarawak's windows credential.

E.g. # 1

User name: 7D7A1111

Password: *****

Logon Domain: STUDENT

Click 'OK' to submit.

E.g. #2

User name: john.doe

Password: *****

Logon Domain: STAFF

- Upon successful authentication, you shall see a message informing you that you are now connected.





4. Browser's Proxy Settings

4.1 Internet Explorer:

1. Go to 'Tools' > 'Internet Options' > 'Connections' Tab > 'LAN Settings'
2. Select 'Use a proxy server for you LAN' check-box.
 - Fill in the following for the 'Address' and 'Port':
Address: proxy.student.curtin.edu.my
Port: 8080
3. Click 'Advanced'.
 - Under the 'Exceptions' field, fill in the following:
localhost; 127.0.0.1; *.curtin.edu.my; *.curtin.edu.au;
4. Click 'OK' all the way to apply the setting.

4.2 Mozilla Firefox:

1. Go to 'Tools' > 'Options' > 'Network' Tab > 'Settings...'
2. Select 'Manual proxy configuration:'
 - Fill in the following for 'HTTP Proxy' and 'Port':
Address: proxy.student.curtin.edu.my
Port: 8080
 - Fill in the following for 'No Proxy for:':
Localhost, 127.0.0.1, .curtin.edu.my, .curtin.edu.au
3. Click 'OK' all the way to apply the setting.

4.3 Opera:

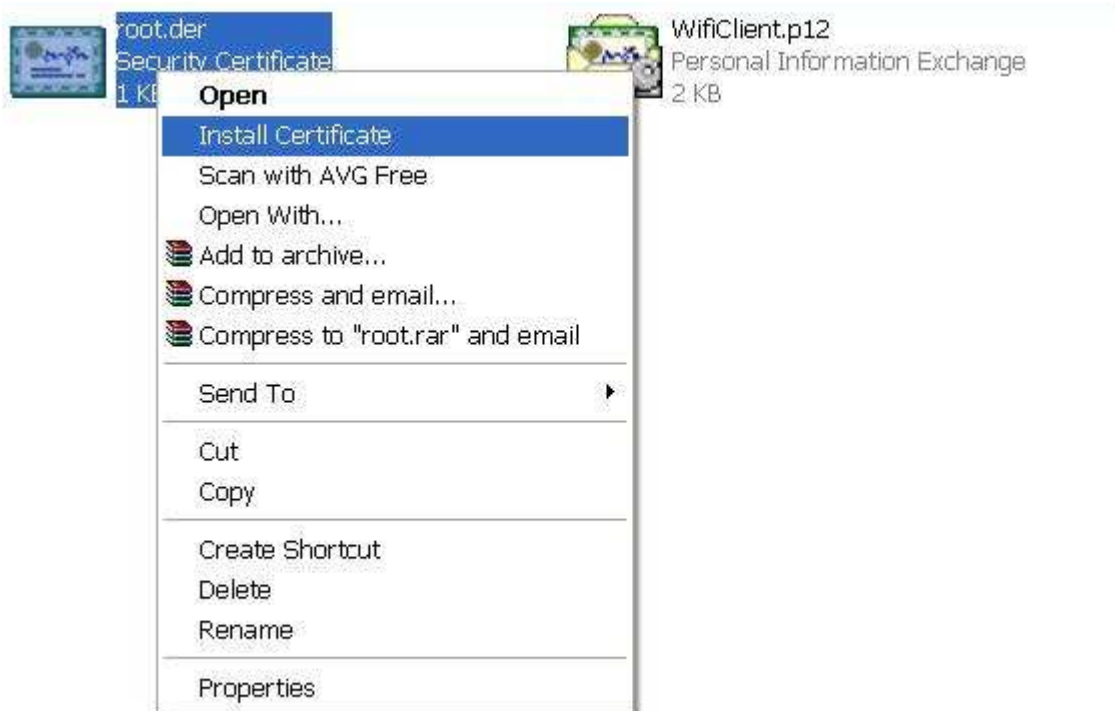
1. Go to 'Tools' > 'Preferences' > 'Advanced' Tab > 'Network' > 'Proxy servers'
2. Select the HTTP & HTTPS check-boxes.
 - Fill in the following for the HTTP & HTTPS fields and ports:
Address: proxy.student.curtin.edu.my
Port: 8080
3. Select the 'Do no use proxy on the addresses below' check-box.
 - Fill in: localhost, 127.0.0.1, .curtin.edu.my, .curtin.edu.au
4. Click 'OK' all the way to apply the setting.

Important Notes:

- Your Windows Firewall and/or Anti-Virus programmes may be preventing you from accessing the internet. Please fine-tune or turn off these services to test the connection if you find that your browser is unable to load a webpage.
- You are connecting to the wireless network at your own risk.
- Handheld devices with WiFi features may not be supported.
- Please read & understand the ICT Policies & Procedure available at:
http://www.curtin.edu.my/sch_dept/ICT/policies/index.htm

Appendix

A. Installing the 'root' certificate.







B. Installing the 'client' certificate.





