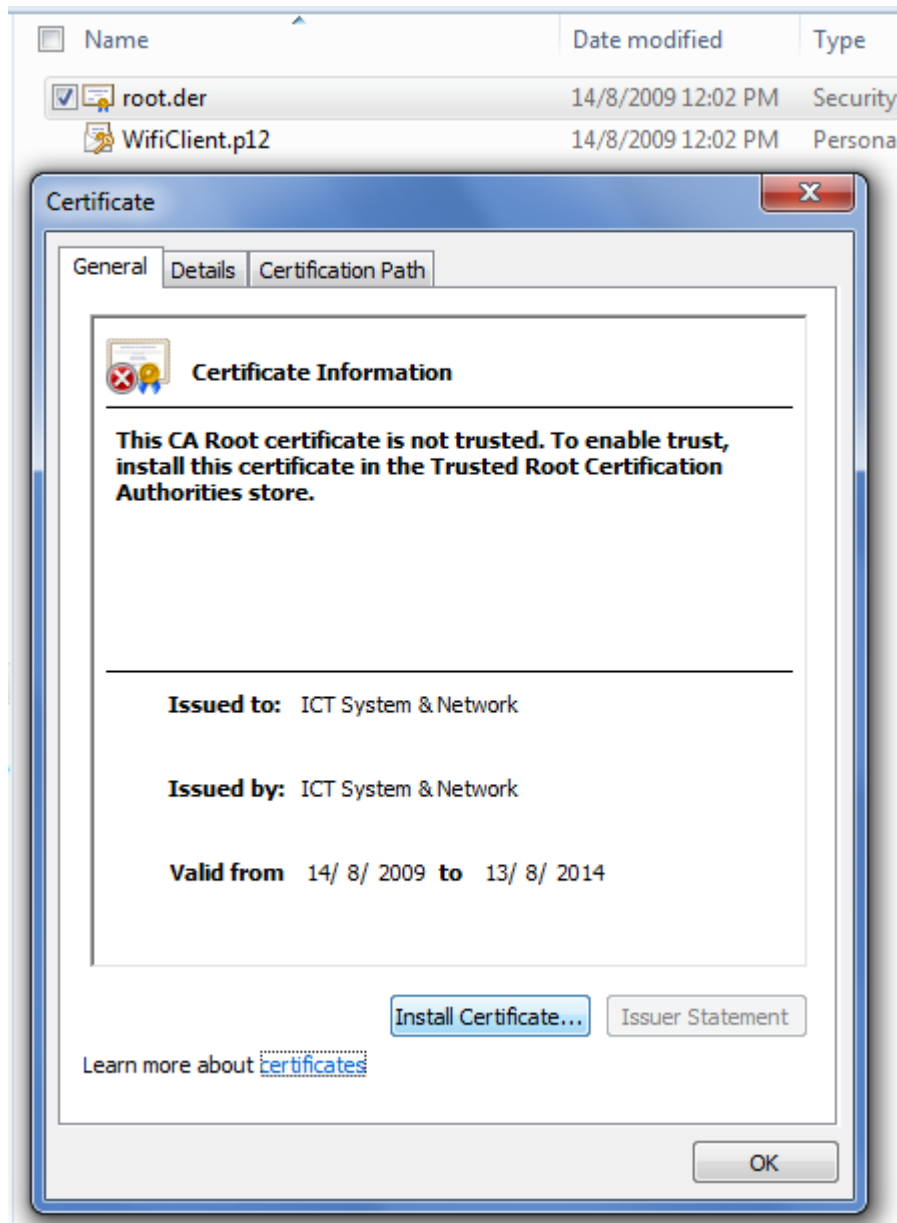




A. Certificates Installation - root

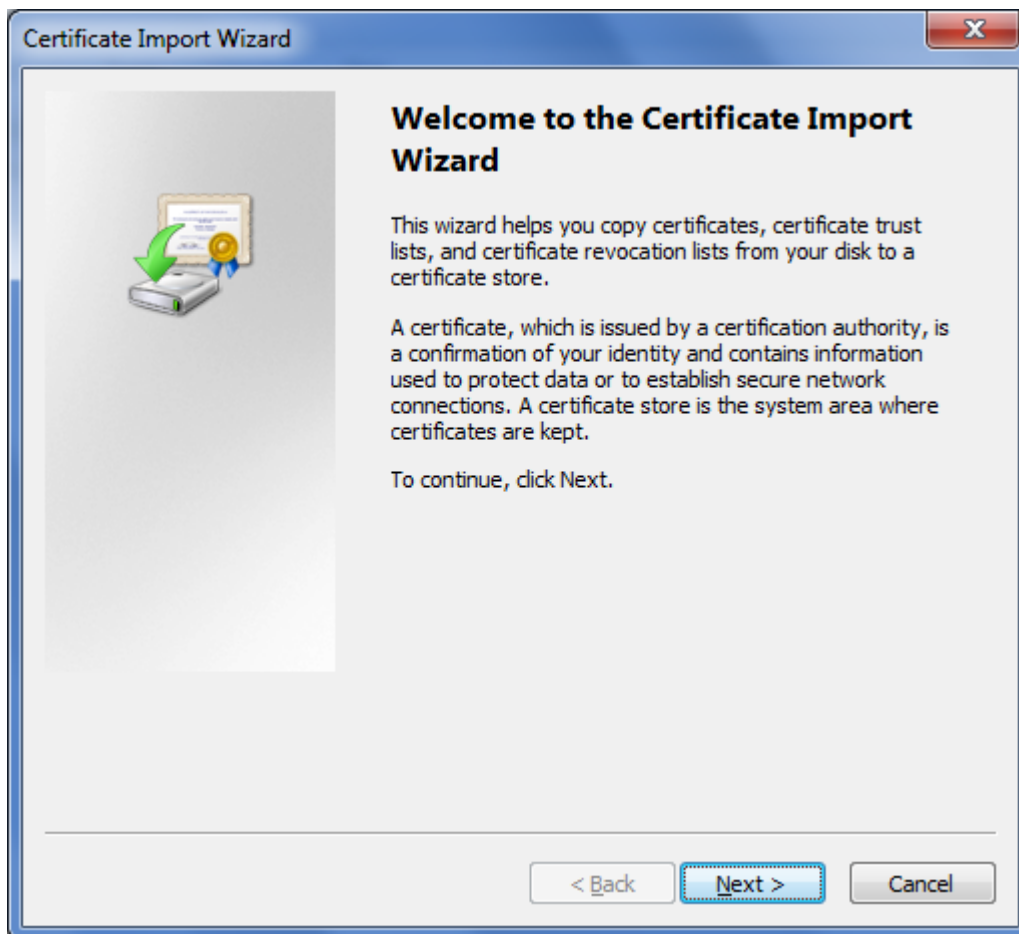
After extracting "CurtinWireless-18082009.zip", you will find two certificate files, namely "root.der" and "WifiClient.p12".

1. Double-click on "root.der".
2. Click "Install Certificate..." to begin the root certificate installation.



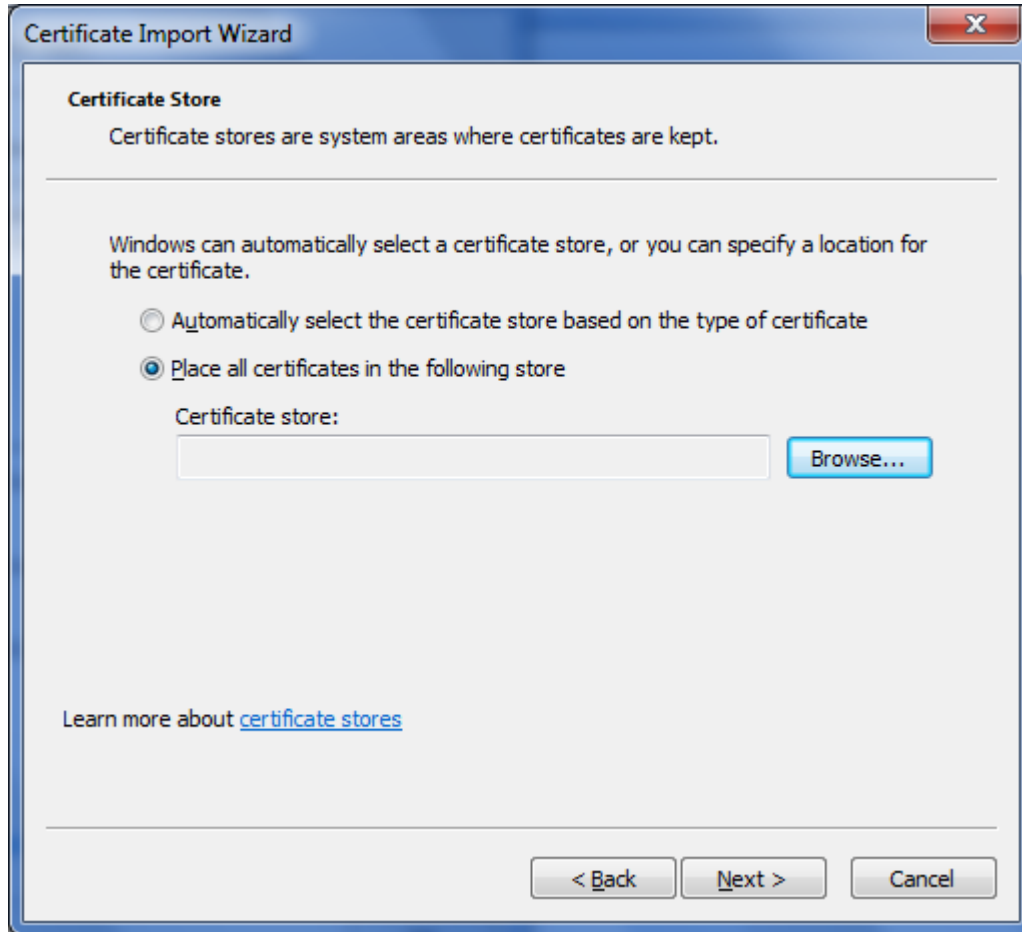


3. Click "Next >".

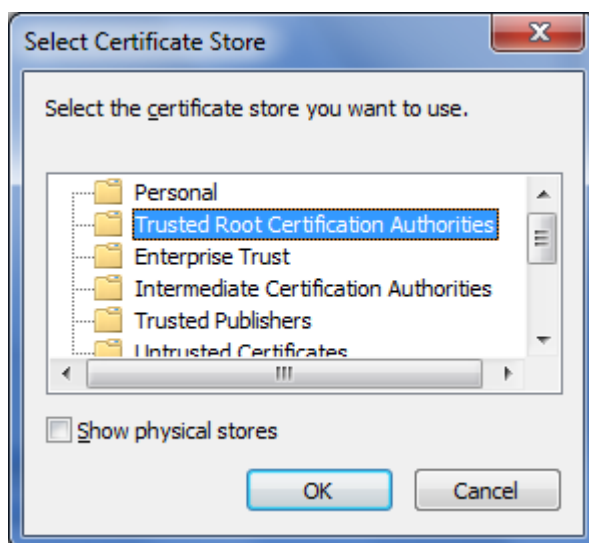




4. Select "Place all certificates in the following store".
5. Click "Browse...".

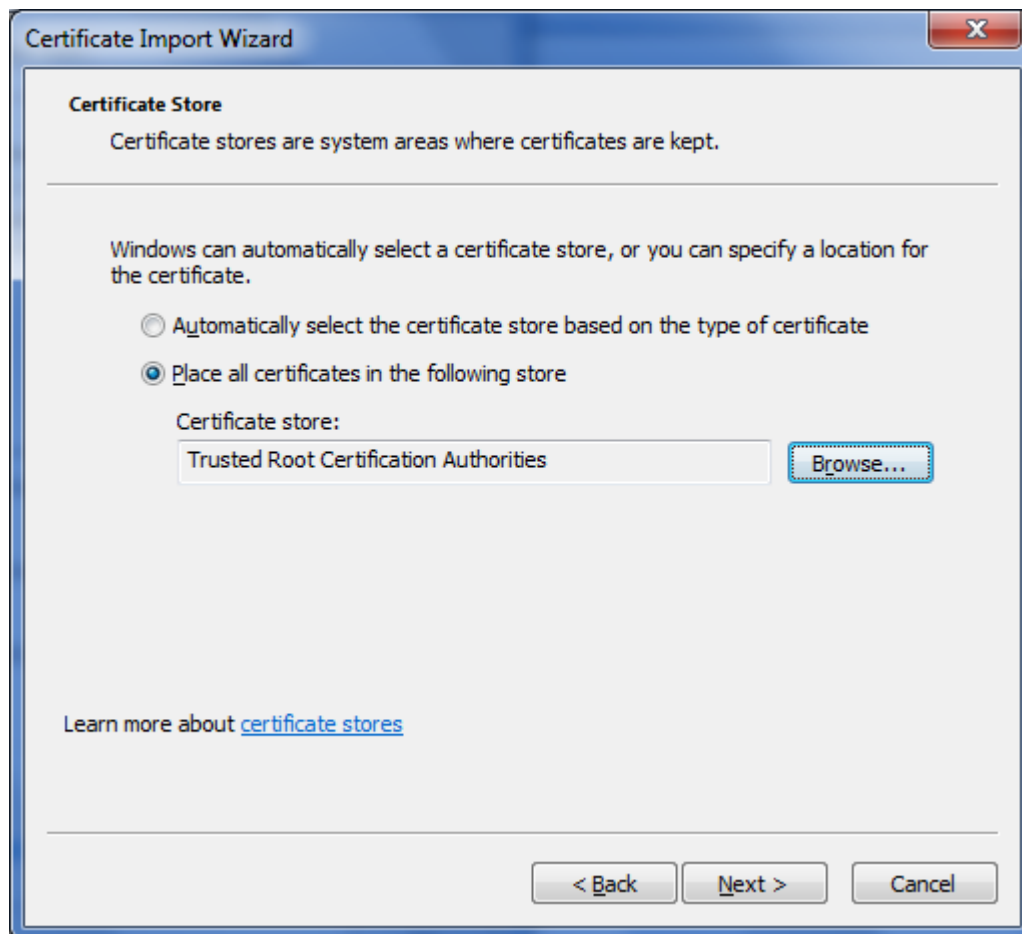


6. Select "Trusted Root Certification Authorities" from the list.
7. Click "OK".



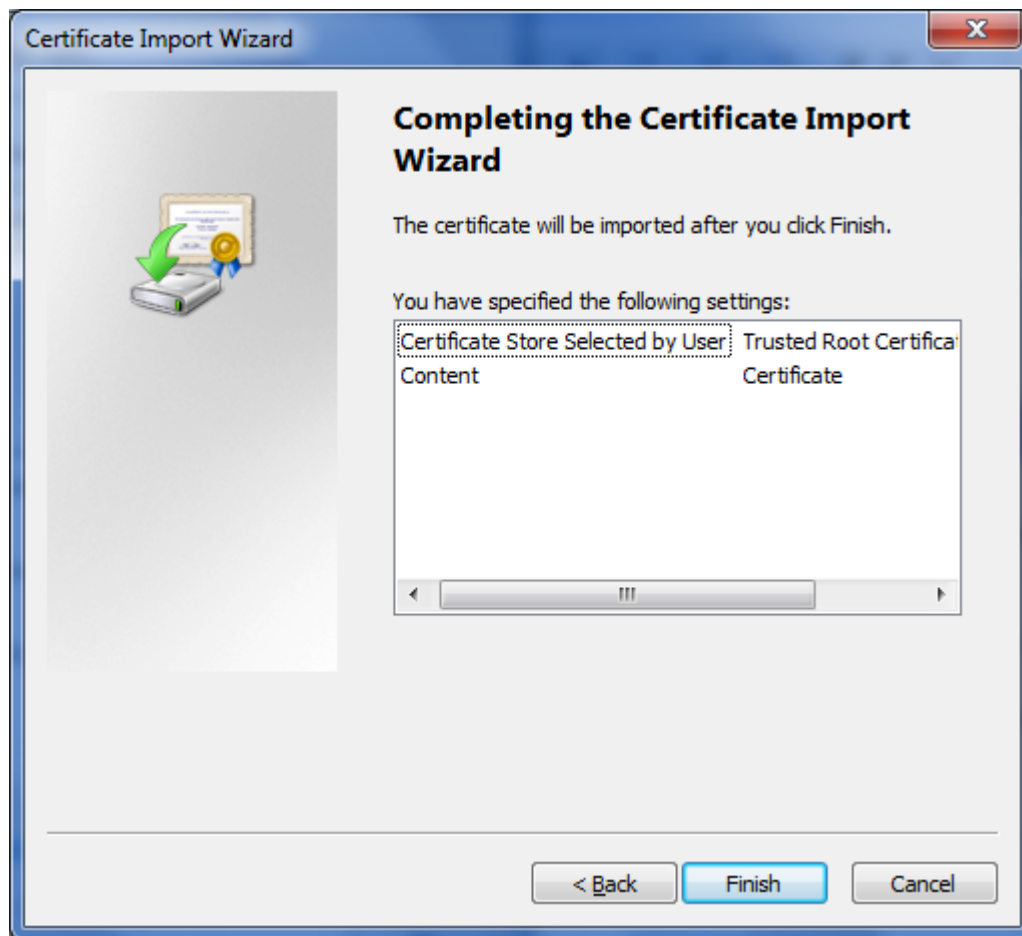


8. Click "Next >".



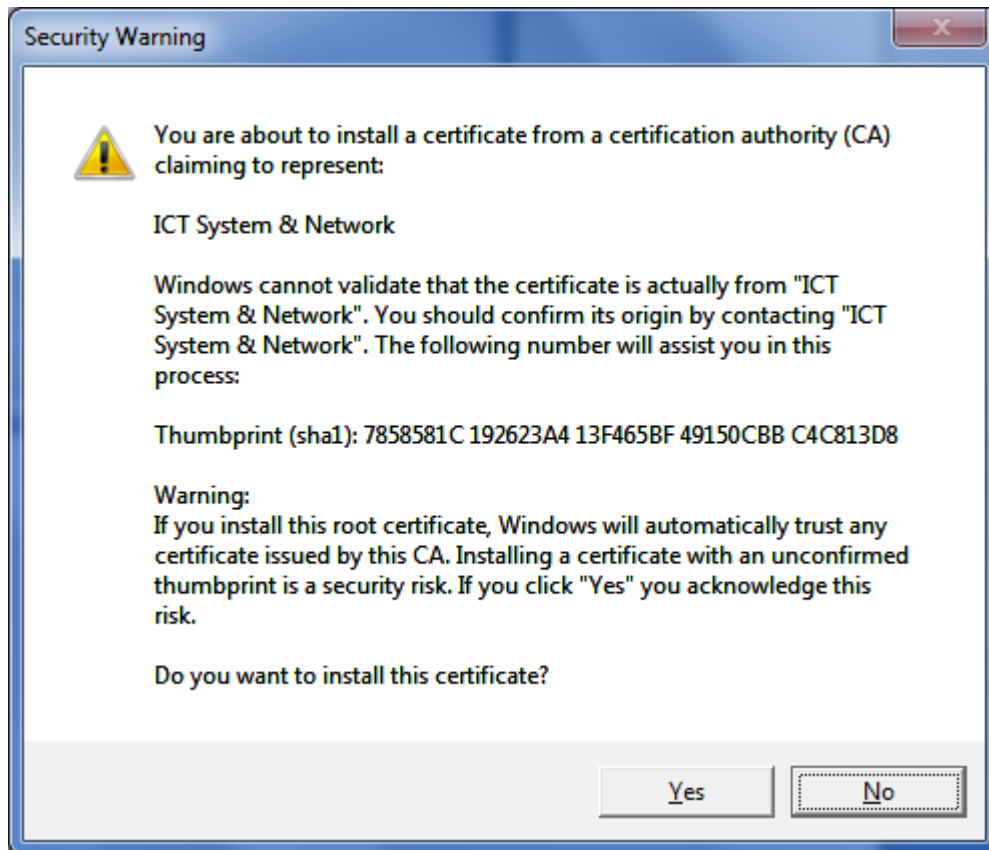


9. Click "Finish".

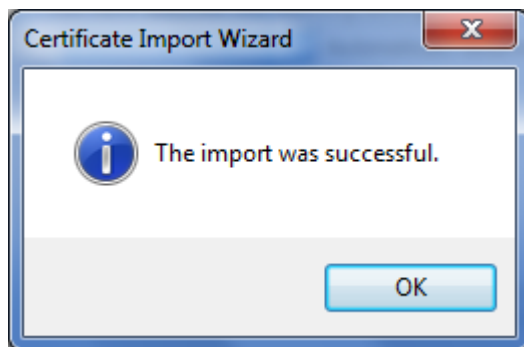




10. Click "Yes", to install the root certificate.



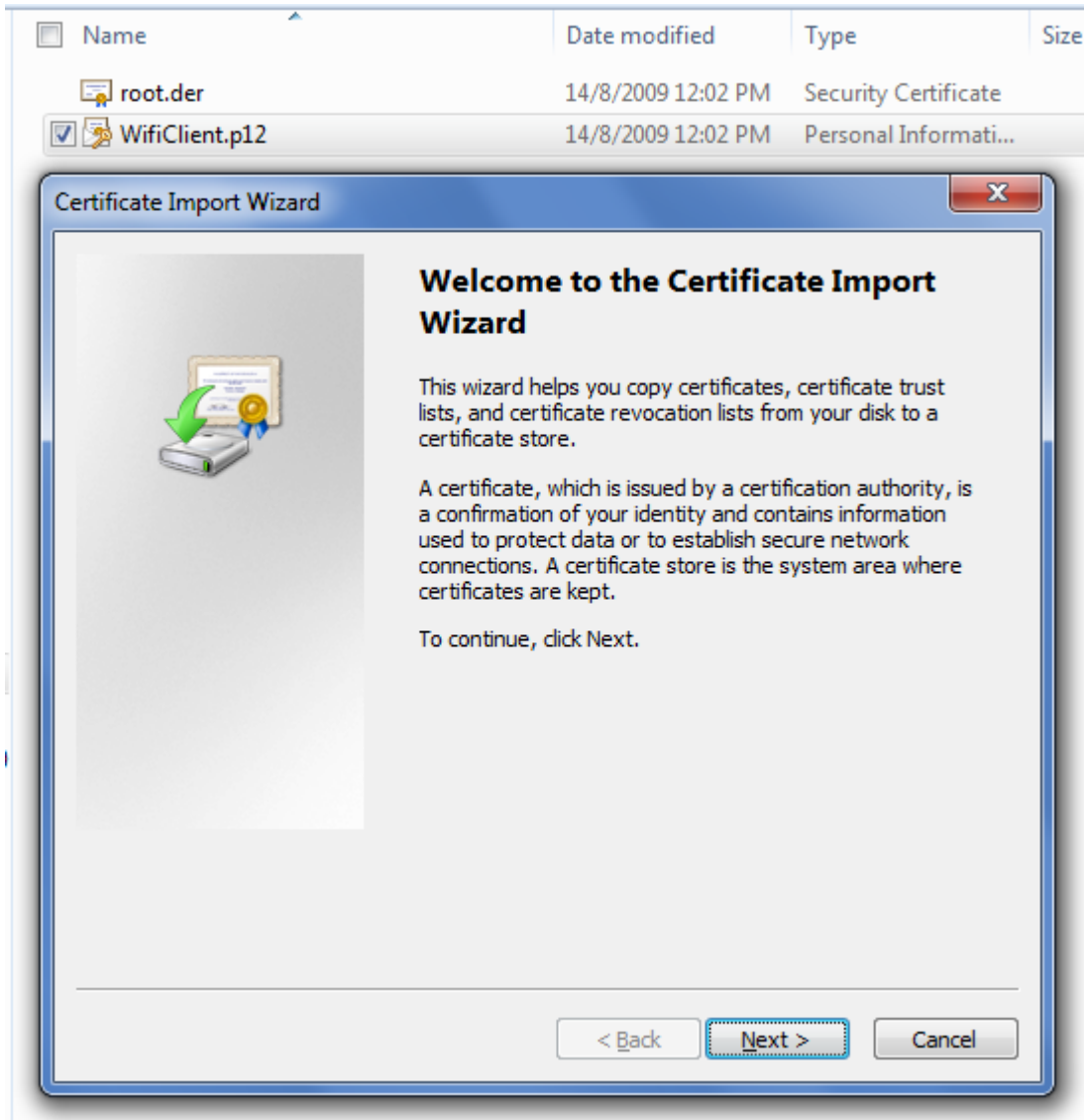
11. Click "OK".





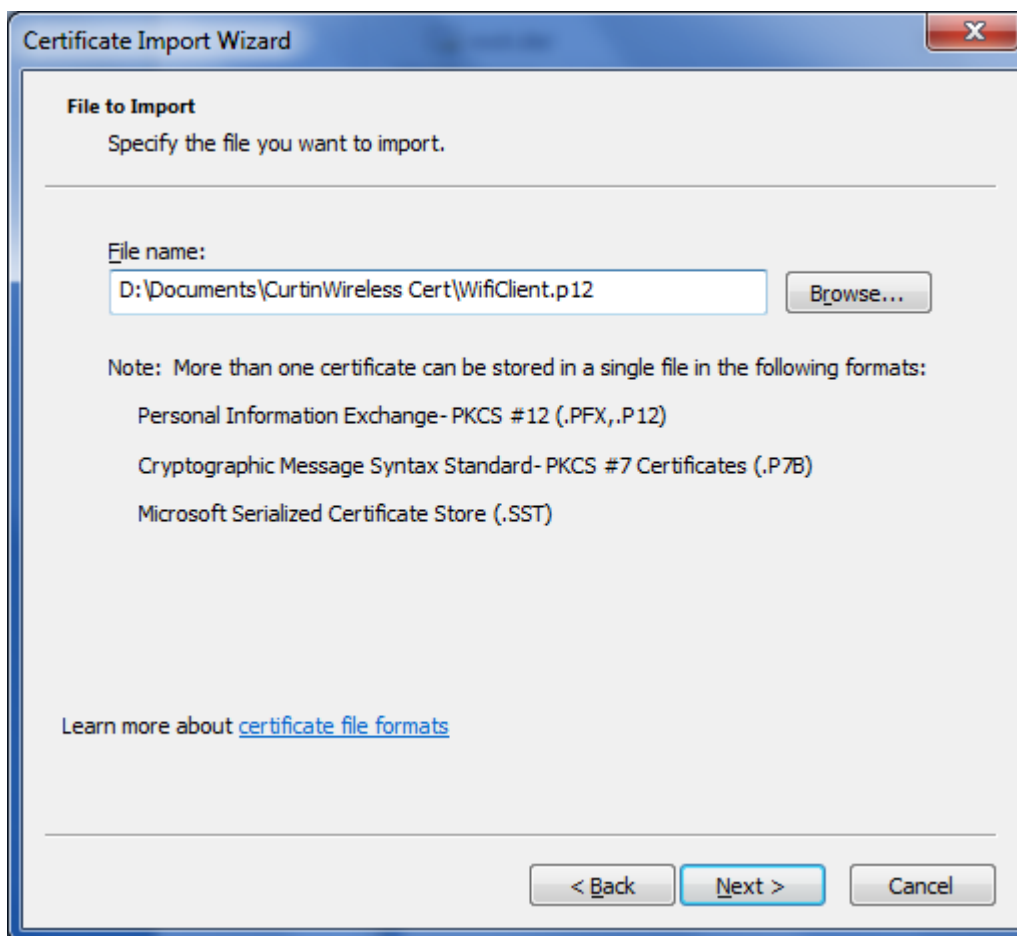
B. Certificates Installation - client

1. Double-click on "WifiClient.p12".
2. Click "Next >" to begin the client certificate installation.





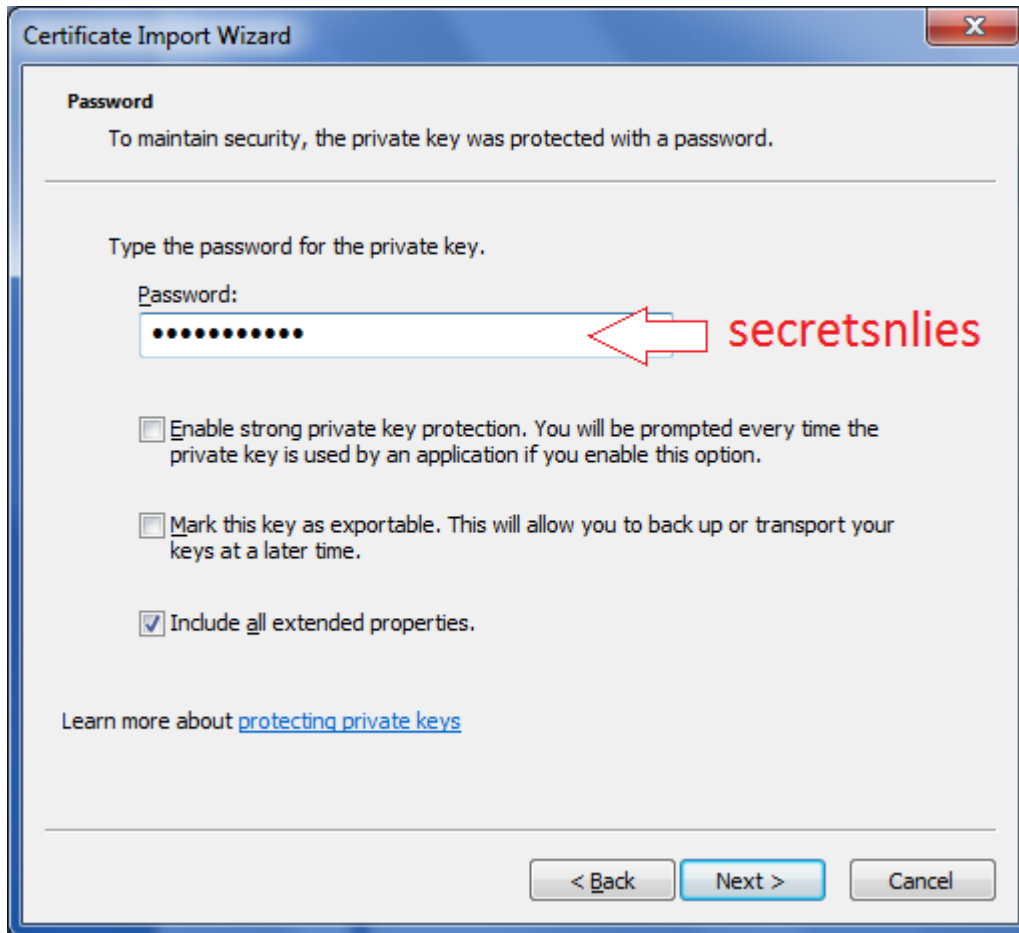
3. Click "Next >".



How To Connect To Curtin's Wireless Network (Win Vista & Win 7)

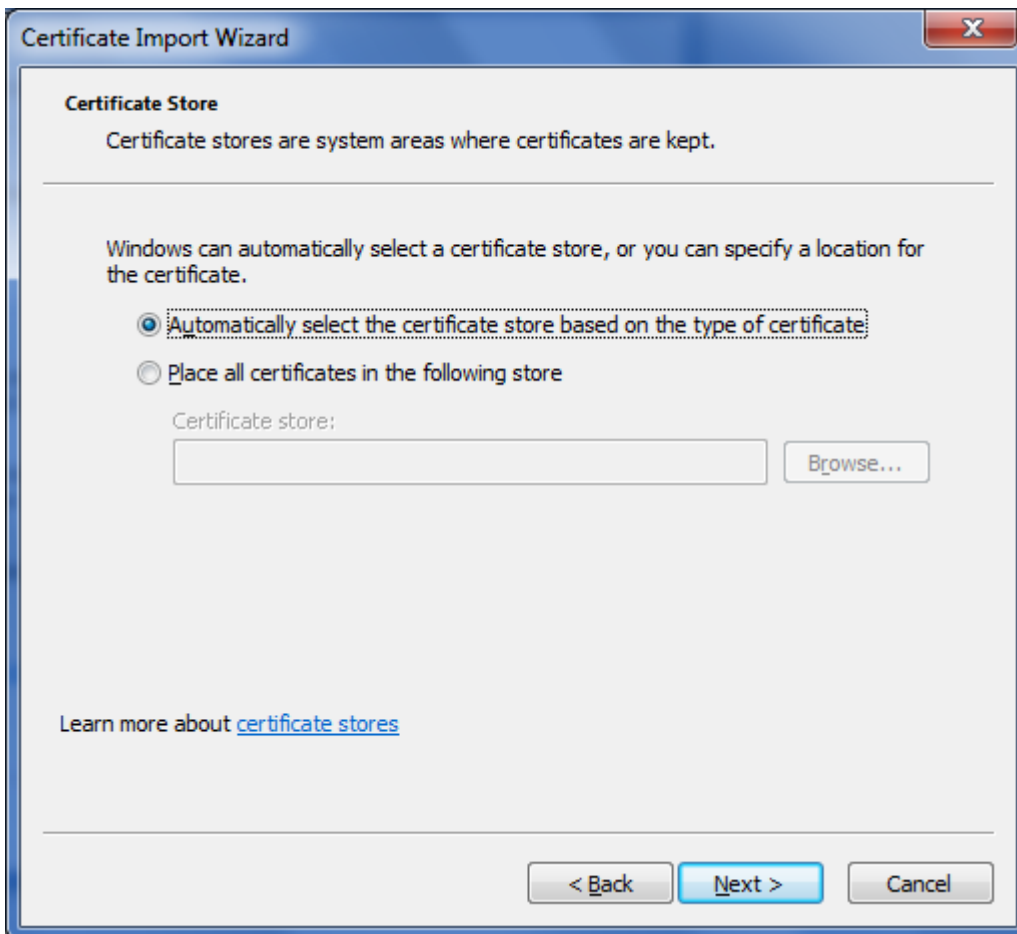


4. Key in the password: secretsnlies
5. Click "Next >".



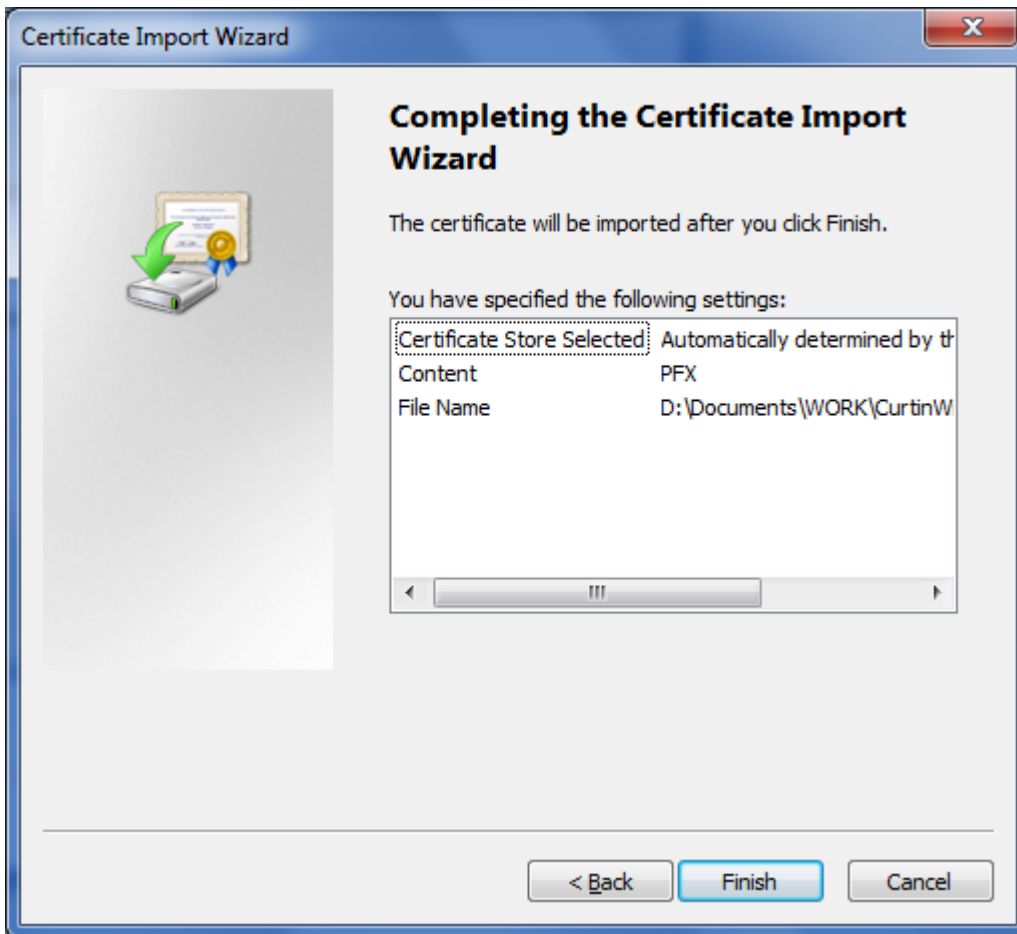


6. Select "Automatically select the certificate store based on the type of certificate".
7. Click "Next >".

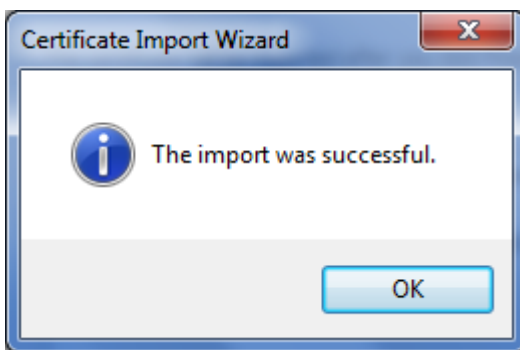




8. Click "Finish".



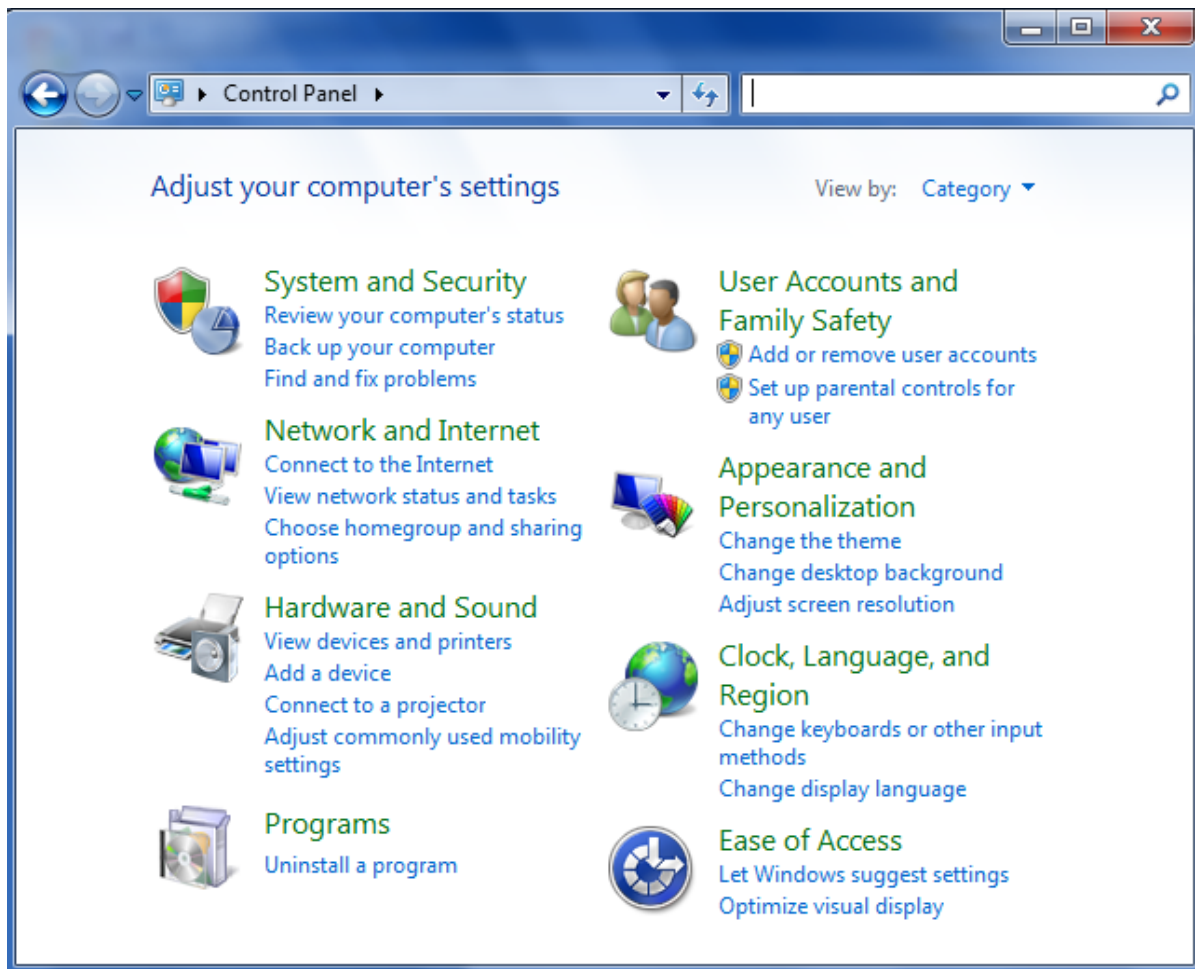
9. Click "OK".





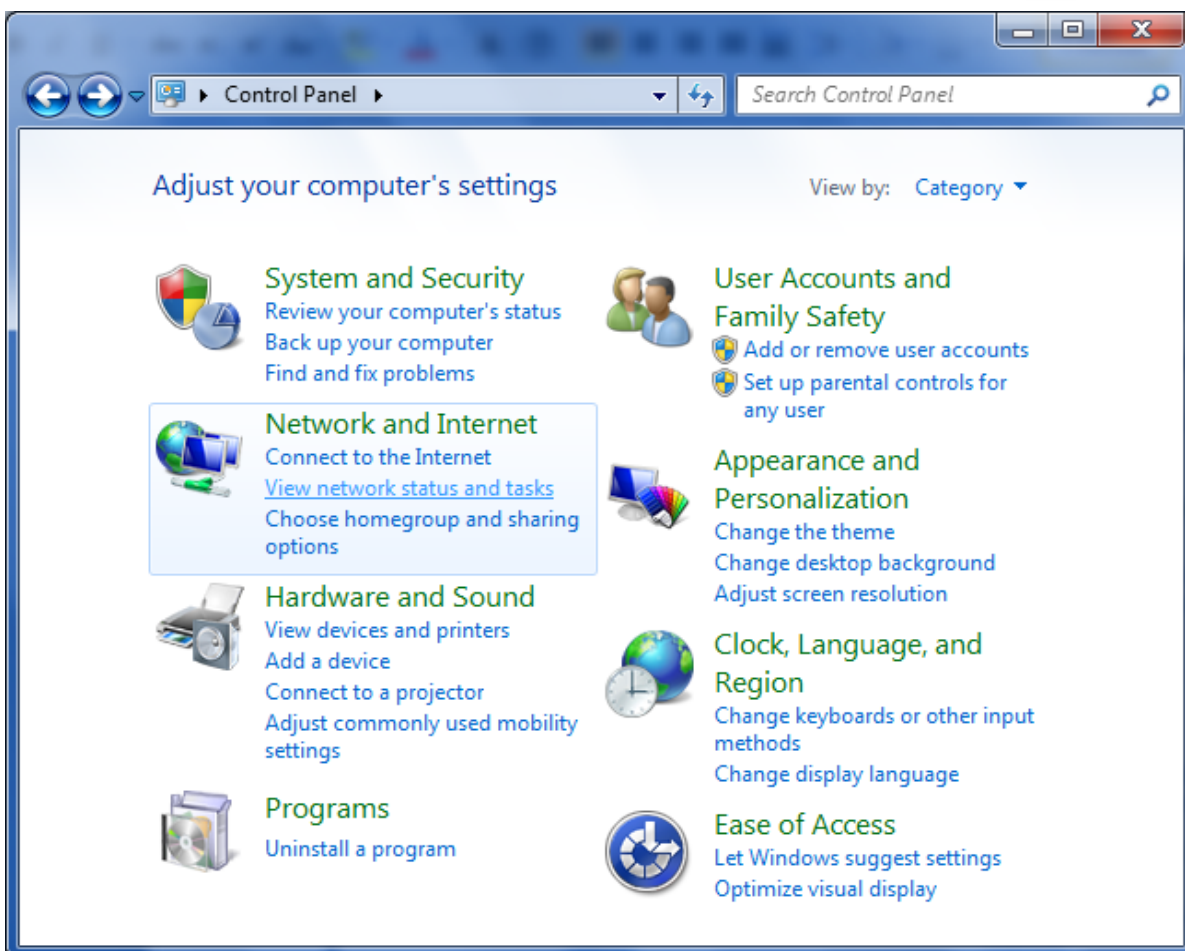
C. Wireless Adapter Configuration

1. Go to "Start" → "Control Panel".

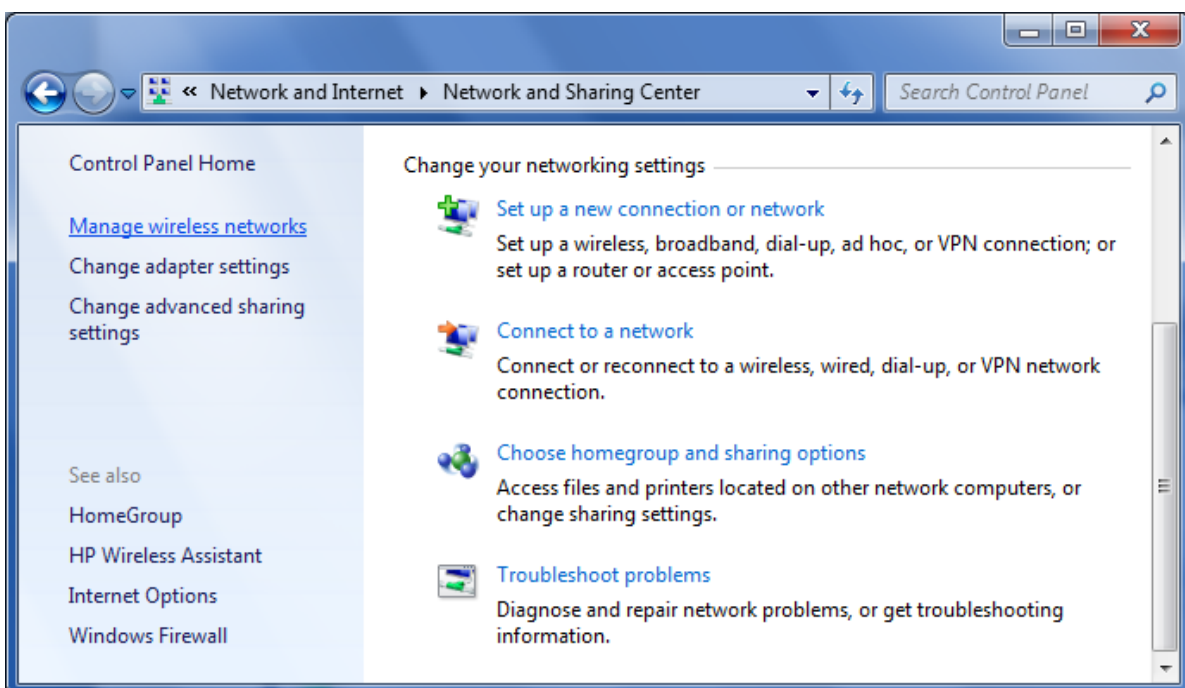




2. Under "Network and Internet", click "View network status and tasks".

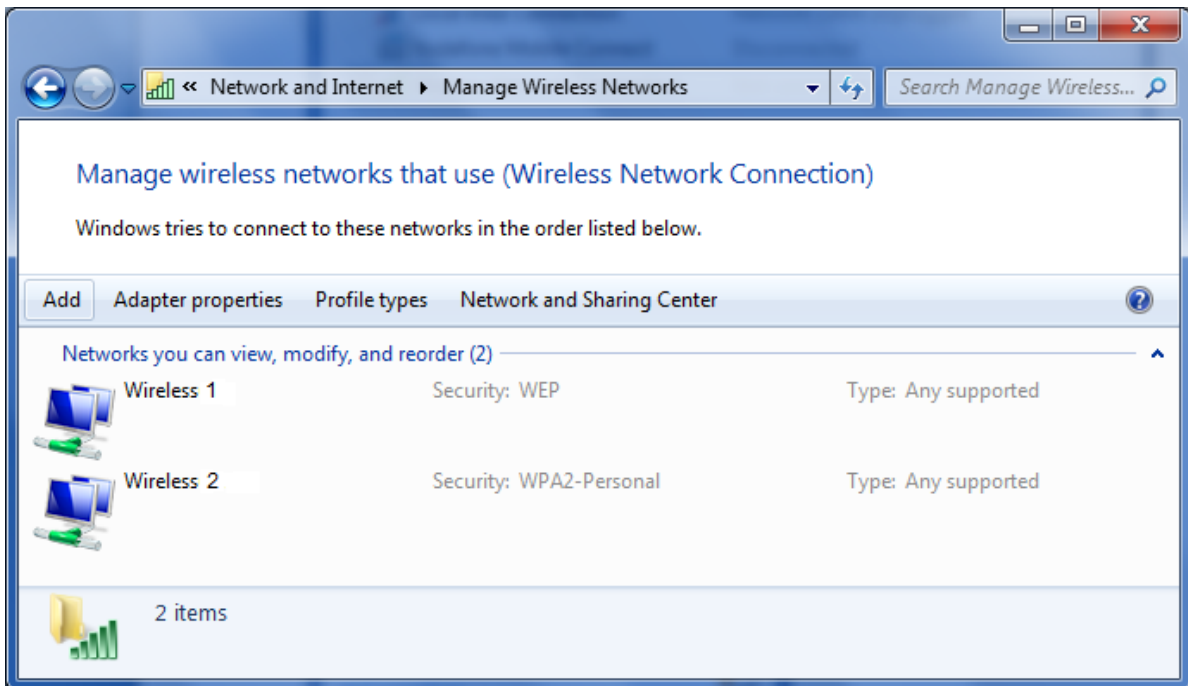


3. On the left-hand column, click "Manage wireless networks".

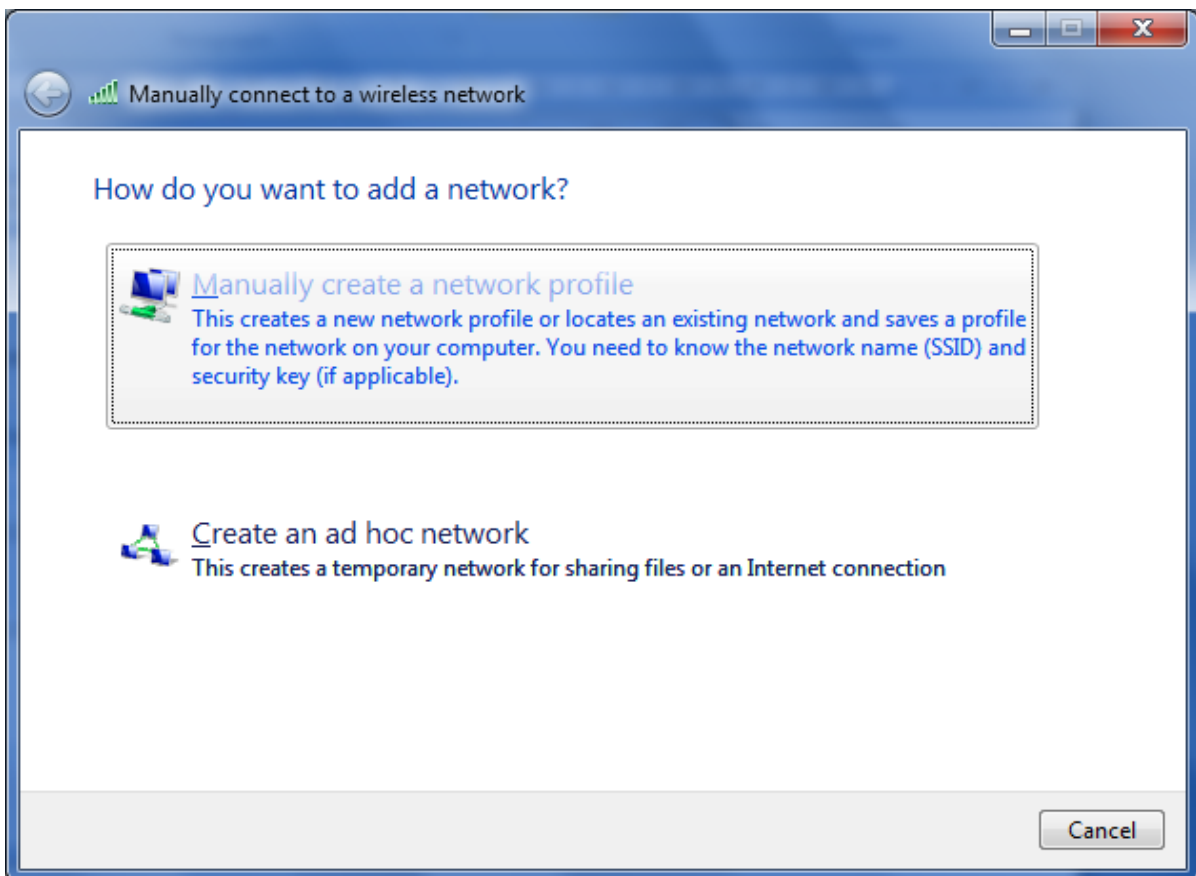




4. Click "Add".



5. Click "Manually create a network profile".



How To Connect To Curtin's Wireless Network (Win Vista & Win 7)



6. Network name: CurtinWireless
7. Security type: 802.1x
8. Click "Next".

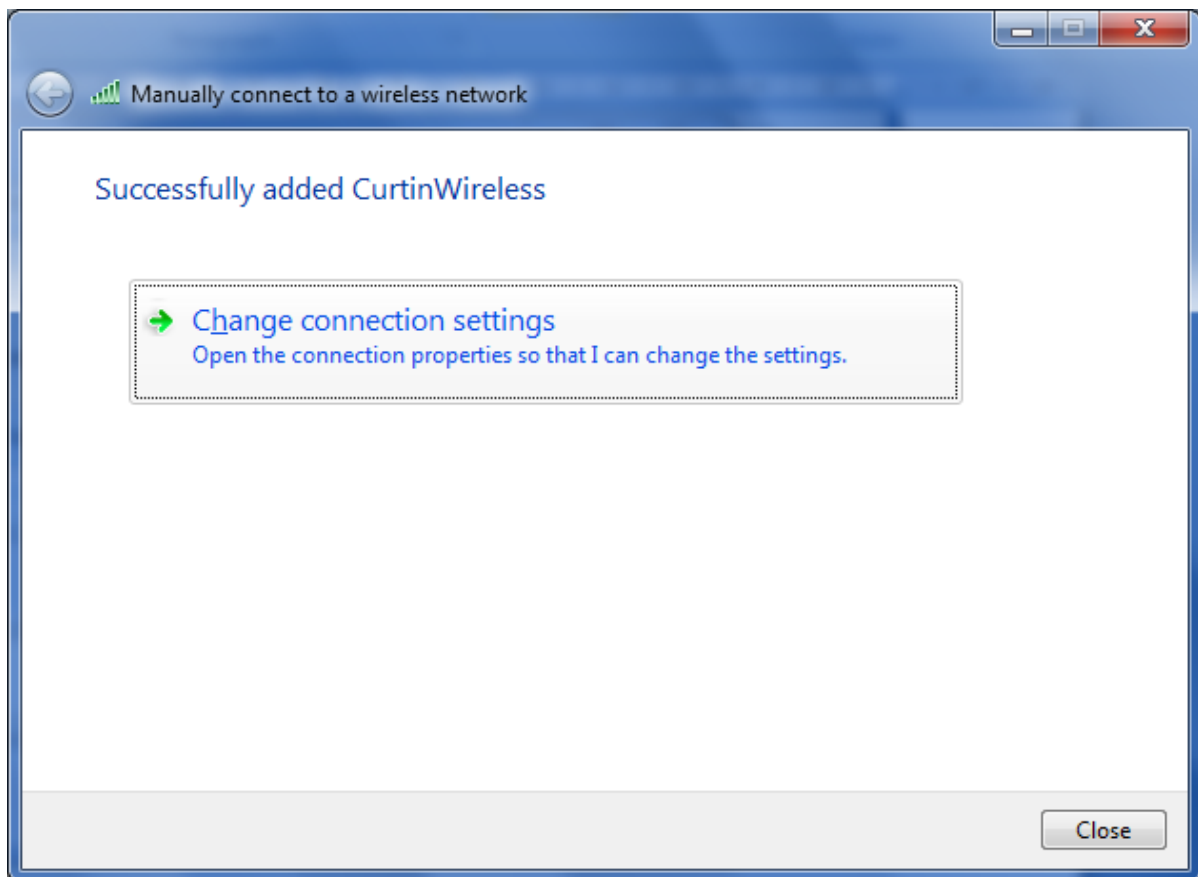
A screenshot of a Windows Network Setup dialog box titled "Manually connect to a wireless network". The dialog box has a blue header bar with a back arrow icon and a signal strength indicator. The main content area is white and contains the following fields and options:

- Network name:** A text input field containing "CurtinWireless".
- Security type:** A dropdown menu with "802.1x" selected.
- Encryption type:** A dropdown menu with "WEP" selected.
- Security Key:** A text input field, currently empty, with a "Hide characters" checkbox to its right.
- Start this connection automatically**
- Connect even if the network is not broadcasting**
Warning: If you select this option, your computer's privacy might be at risk.

At the bottom right of the dialog box, there are two buttons: "Next" (highlighted in blue) and "Cancel".

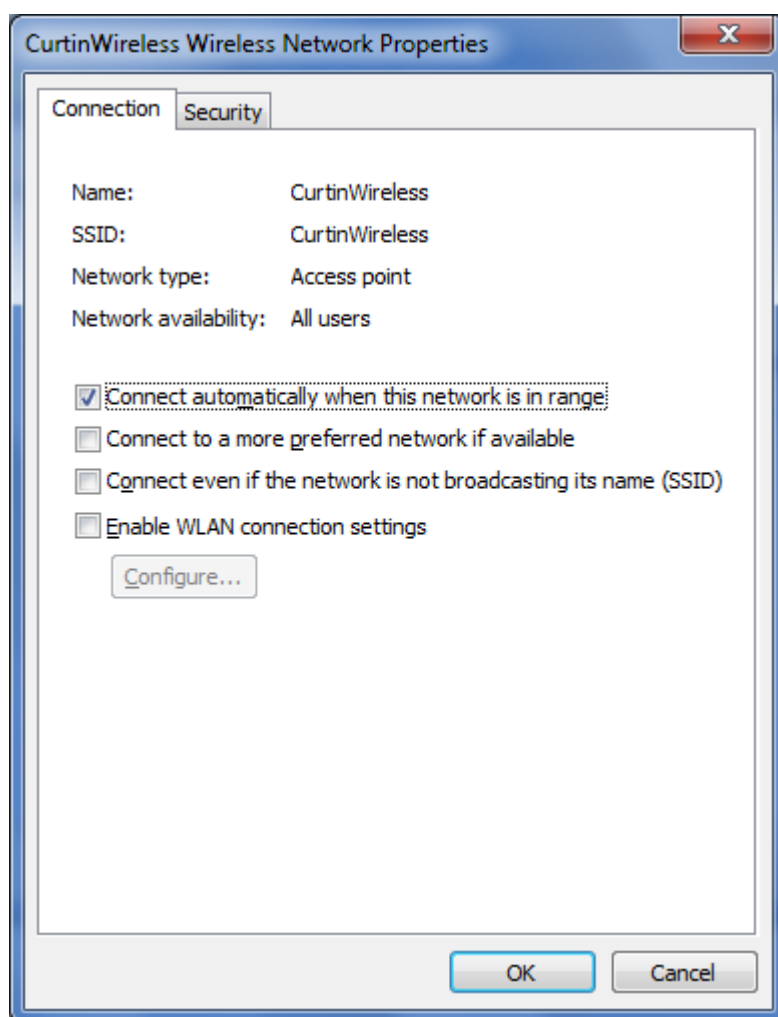


9. Click "Change connection settings".





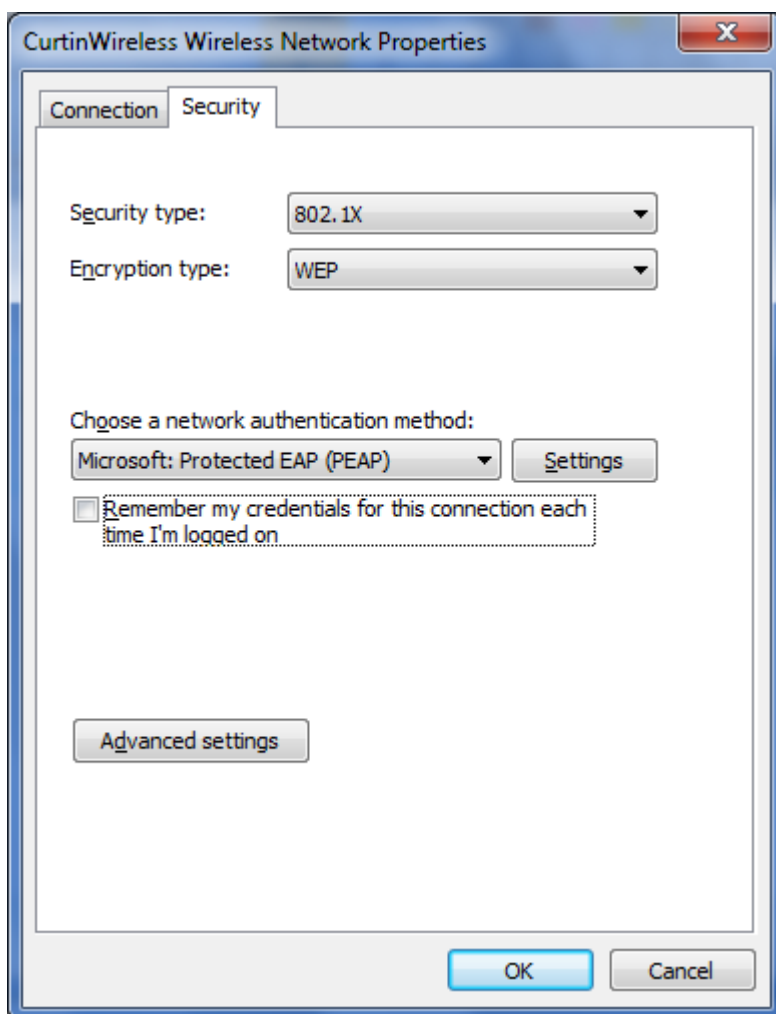
10. Click "Security" tab.



How To Connect To Curtin's Wireless Network (Win Vista & Win 7)

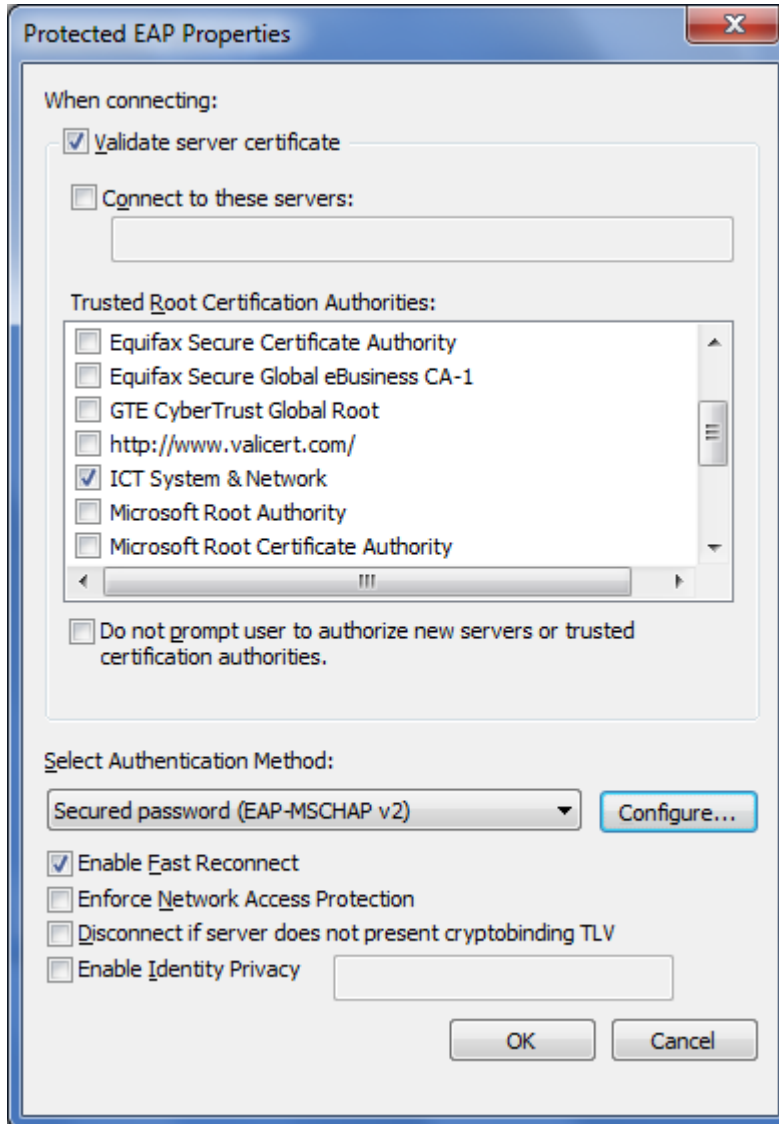


11. Clear the checkbox for "Remember my credentials for this connection each time I'm logged on".
12. Click "Settings".



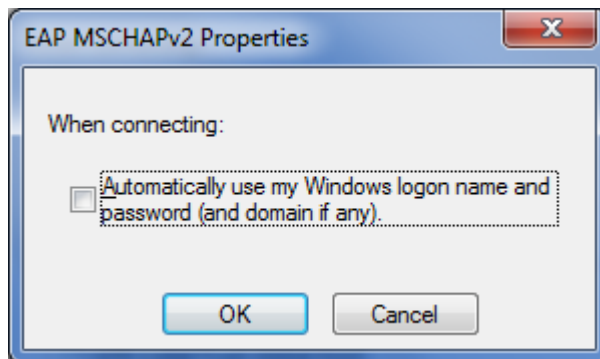


13. Select checkbox for "Validate server certificate".
14. Scroll through the list of "Trusted Root Certification Authorities" and select checkbox for "ICT System & Network".
15. Click "Configure...".

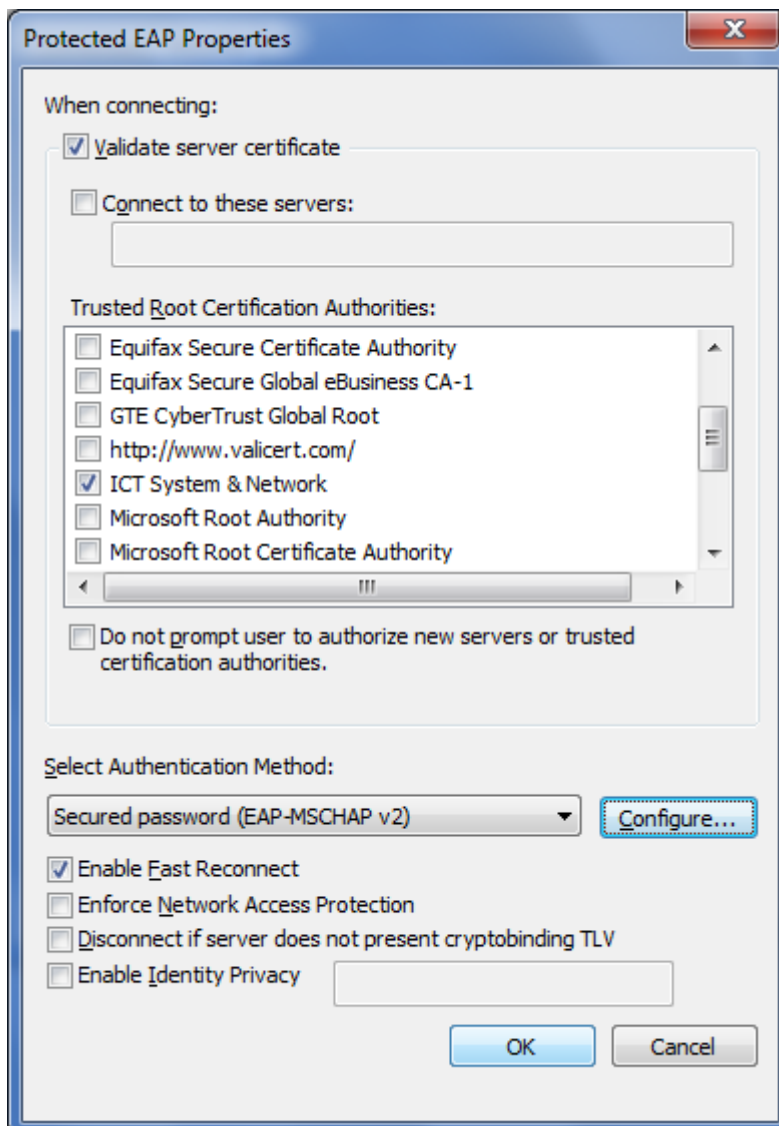




16. Clear the checkbox for "Automatically use my Windows logon name and password (and domain if any)".
17. Click "OK".

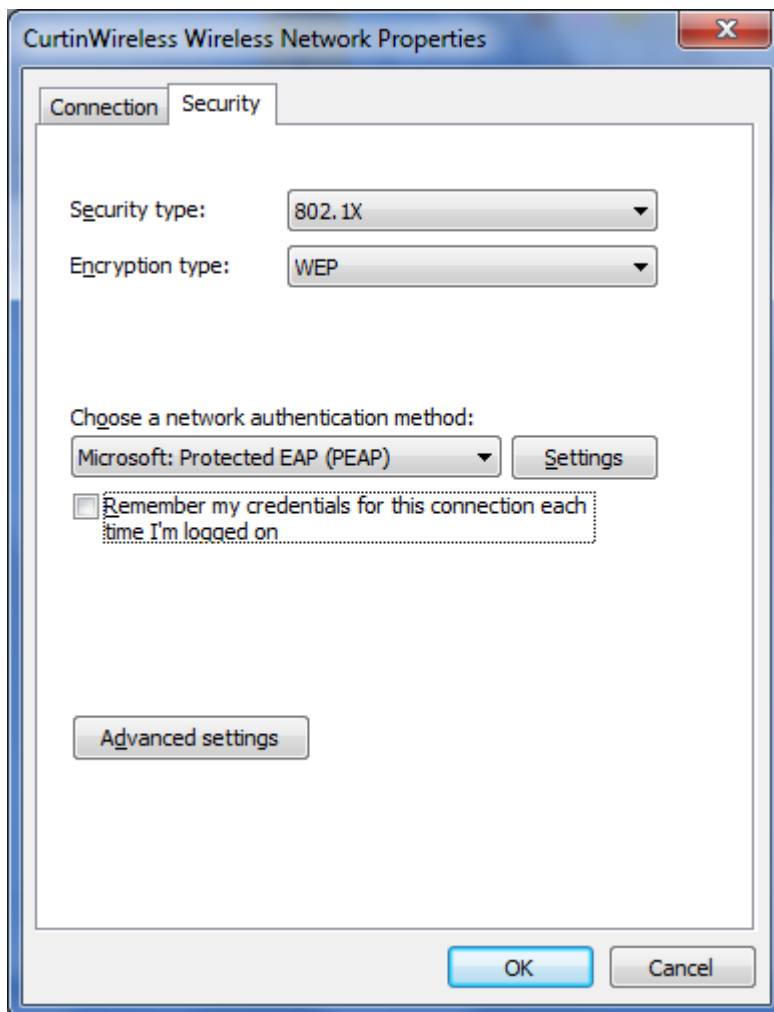


18. Click "OK".



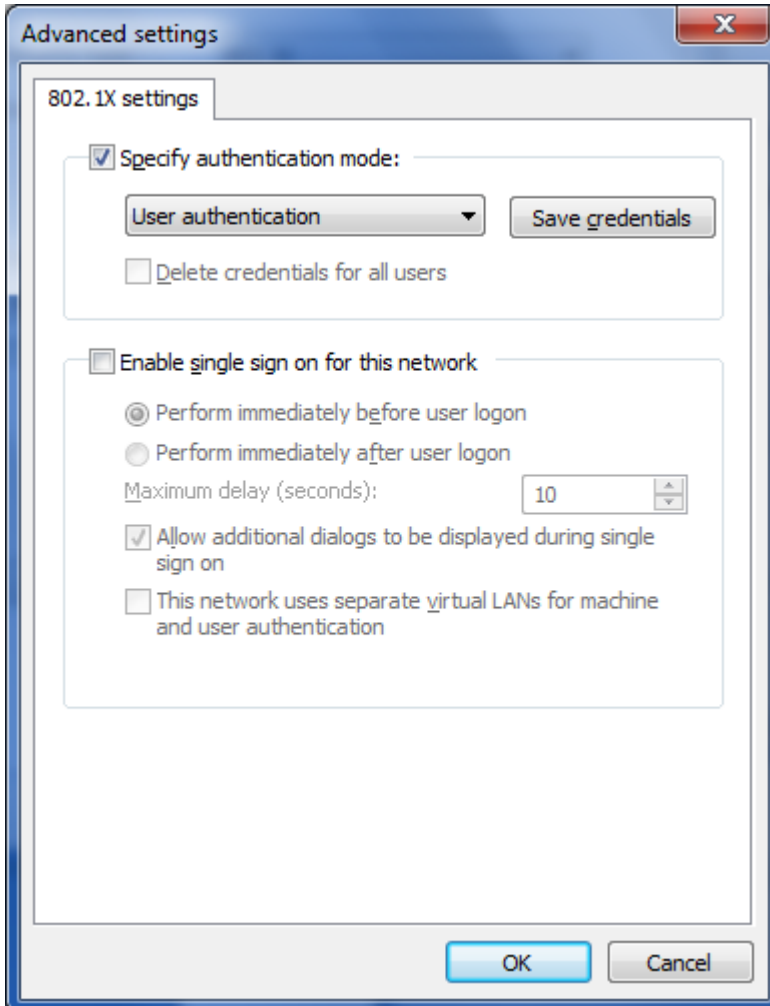


19. Click "Advanced settings".



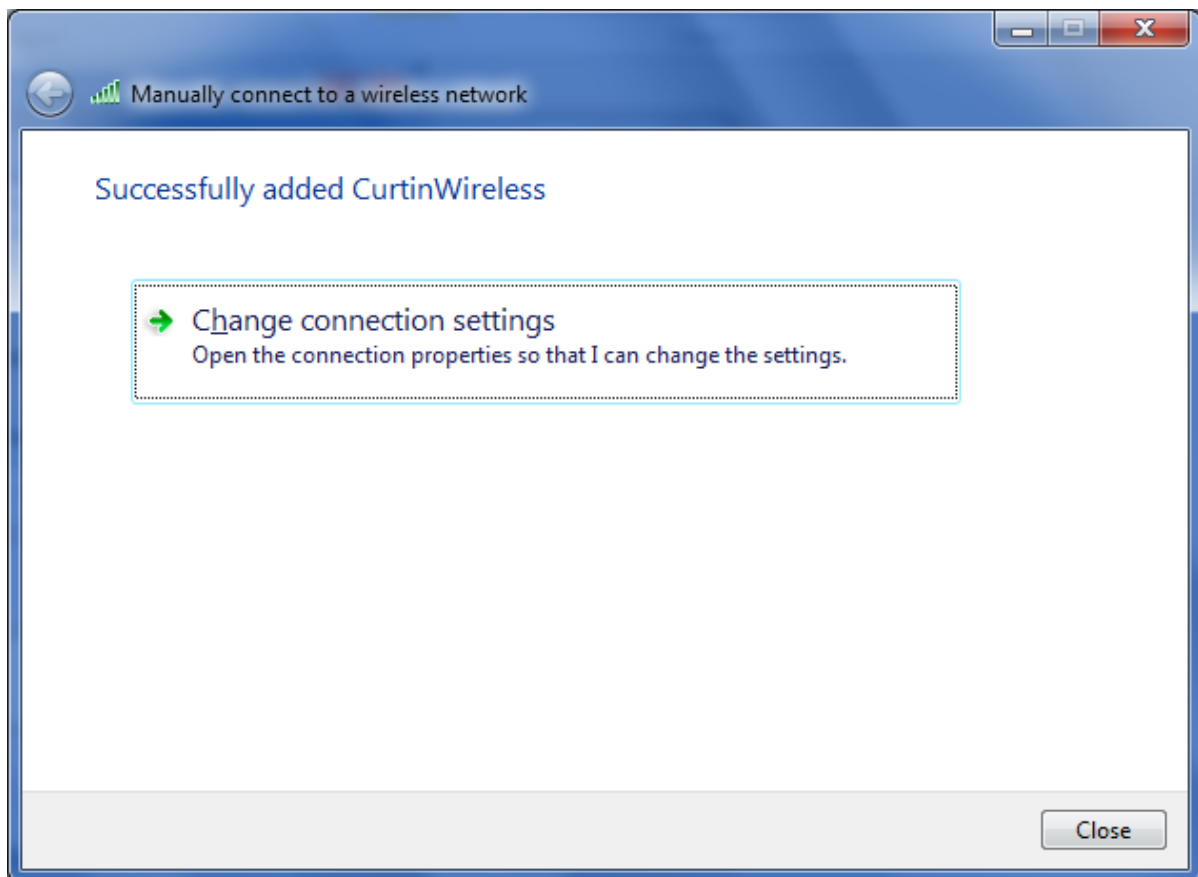


20. Check the checkbox for 'Specify authentication mode'.
21. Select 'User authentication' from the dropdown menu.
22. Click 'OK'.





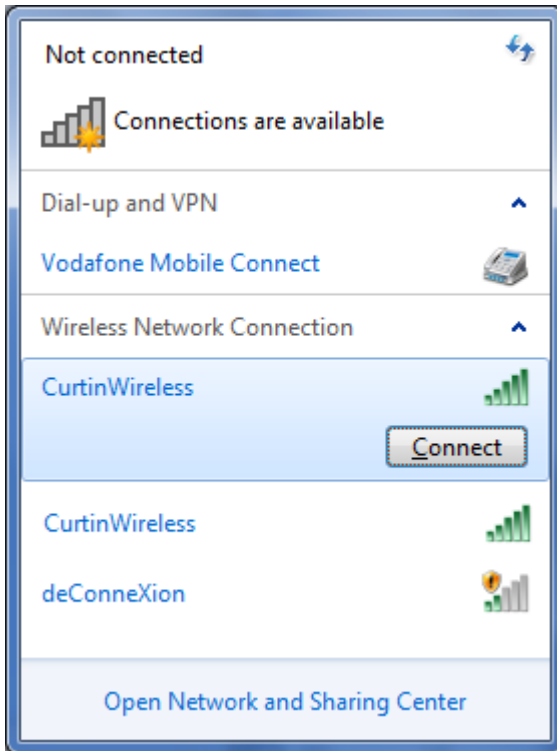
23. Click "Close".





D. Curtin Wireless Connection

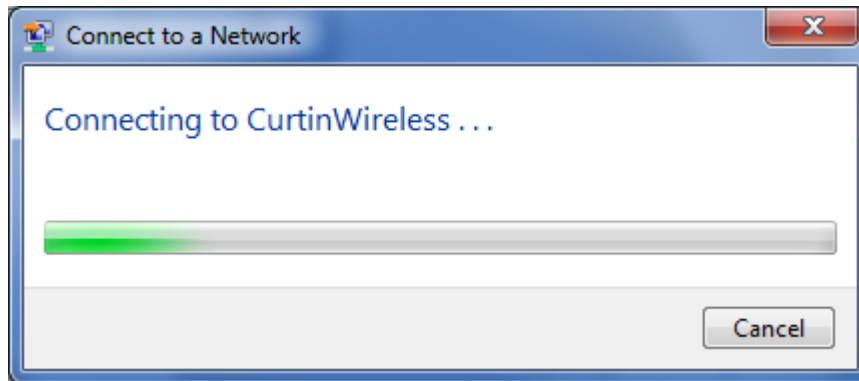
1. Double-click on the wireless connection icon at the bottom right-hand corner of the screen to display a list of Curtin wireless network connections that are available.
2. Select the wireless connection that has the strongest signal.
3. Click "Connect".



How To Connect To Curtin's Wireless Network (Win Vista & Win 7)



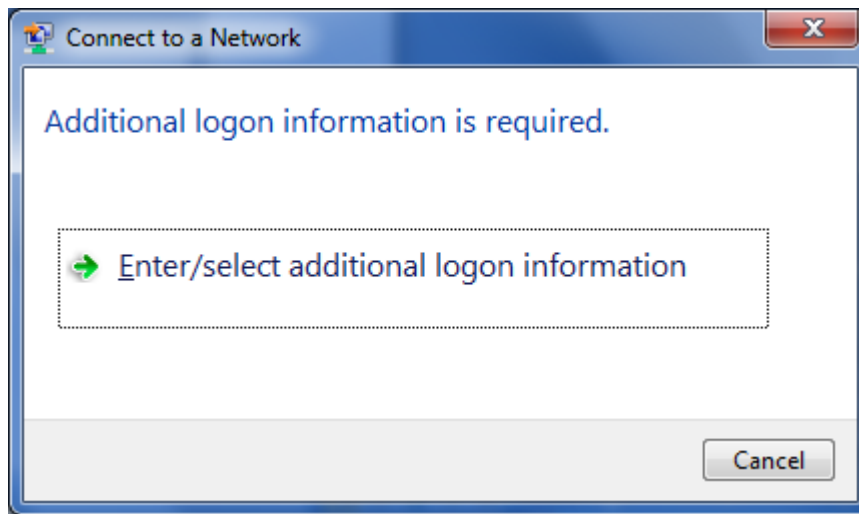
4. The following will be displayed while your laptop is establishing the wireless connection.



How To Connect To Curtin's Wireless Network (Win Vista & Win 7)



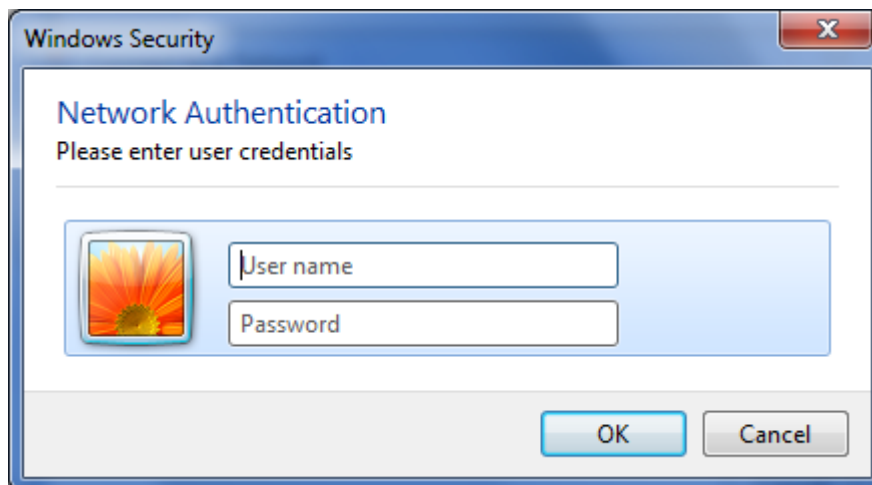
- The connection will prompt you to authenticate yourself before completing the connection.
- Click "Enter/select additional logon information".



- Key in your Curtin Windows Username and Password in the following format:

	STAFF	STUDENT
User name:	STAFF\john.doe	STUDENT\7e0a1234
Password:	<i>Windows password for john.doe</i>	<i>Windows password for 7e0a1234</i>

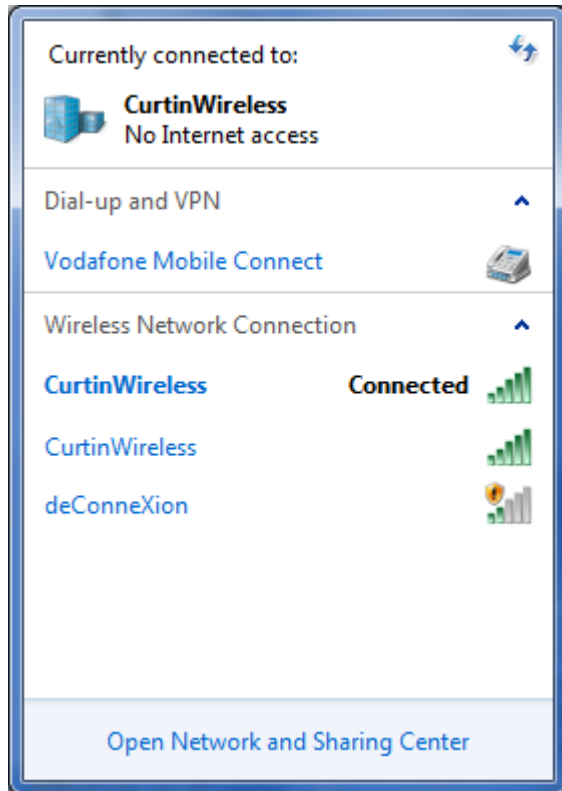
- Click 'OK' to login.



How To Connect To Curtin's Wireless Network (Win Vista & Win 7)



9. Once the connection has been validated against your Windows username and password, your wireless connection will show the status as "Connected".





E. Browser's Proxy Configuration

	Proxy Address	Proxy Port
1	proxy.curtin.edu.my	8080
2	proxy.student.curtin.edu.my	8080

Internet Explorer

1. Go to 'Tools' → 'Internet Options' → 'Connections' Tab → 'LAN Settings'
2. Select 'Use a proxy server for you LAN' check-box.
 - Fill in the 'Address' and 'Port' fields with the information shown in the above table.
3. Click 'Advanced'.
 - Under the 'Exceptions' field, fill in the following:
localhost; 127.0.0.1; *.curtin.edu.my
4. Click 'OK' all the way to apply the setting.

Mozilla Firefox

1. Go to 'Tools' → 'Options' → 'Network' Tab → 'Settings...'
2. Select 'Manual proxy configuration:'
 - Fill in the 'HTTP Proxy' and 'Port' fields with the information shown in the above table.
 - Fill in the following for 'No Proxy for:'
localhost, 127.0.0.1, .curtin.edu.my
3. Click 'OK' all the way to apply the setting.

Opera

1. Go to 'Tools' → 'Preferences' → 'Advanced' Tab → 'Network' → 'Proxy servers'
2. Select the HTTP & HTTPS check-boxes.
 - Fill in the HTTP & HTTPS fields and ports with the information shown in the above table.
3. Select the 'Do no use proxy on the addresses below' check-box.
 - Fill in: localhost, 127.0.0.1, .curtin.edu.my, .curtin.edu.au
4. Click 'OK' all the way to apply the setting.

F. Important Notes

1. Your Windows Firewall and/or Anti-Virus programmes may be preventing you from accessing the internet. Please fine-tune or turn off these services to test the connection if you find that your browser is unable to load a webpage.
2. You are connecting to the wireless network at your own risk.
3. Handheld devices with WiFi features may not be supported.
4. Please read & understand the ICT Policies & Procedure available at:
http://www.curtin.edu.my/sch_dept/ICT/policies/index.htm