

# How to Connect to Curtin's Wireless Network (Mac OS X 10.6.2 – Snow Leopard)



## Certificates Installation

1. Download the certificates from Moodle
2. Extract the zipped file to local folder
3. Double-click on **root.der** file
4. Click on **Always Trust** button



5. Enter **<your mac account password>** for **Password**
6. Click on **OK** button



7. Double-click on **WifiClient.p12** file
8. Enter **secretsnlies** for **Password**
9. Click on **OK** button



# How to Connect to Curtin's Wireless Network (Mac OS X 10.6.2 – Snow Leopard)



## Configuration for "CurtinWireless\_AP" Wireless Network Preferences

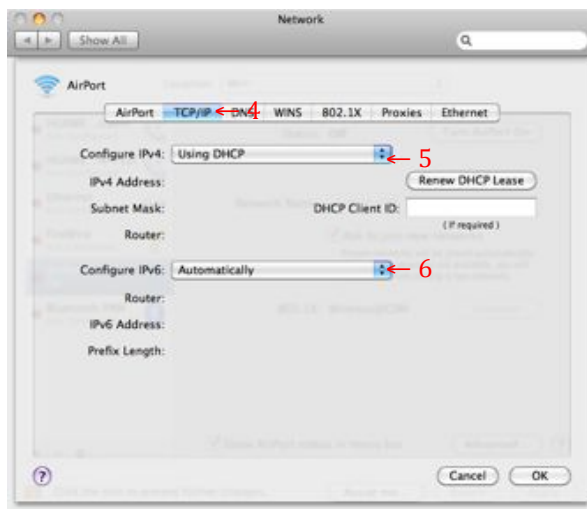
1. Click on **AirPort** status on the menu bar (commonly found on the upper-right corner of the desktop).
2. Click on **Open Network Preferences...**



3. Click on **Advanced...** button



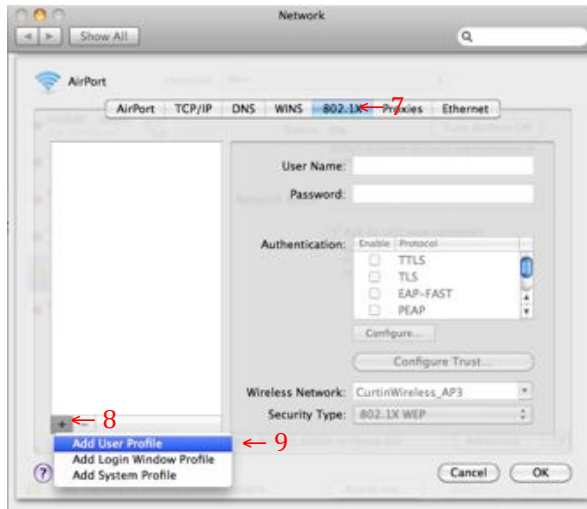
4. Click on **TCP/IP** tab
5. Select **Using DHCP** for **Configure IPv4**
6. Select **Automatically** for **Configure IPv6**



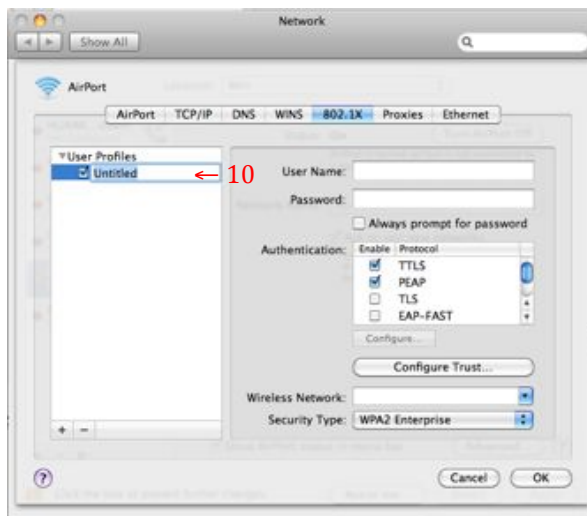
# How to Connect to Curtin's Wireless Network (Mac OS X 10.6.2 – Snow Leopard)



7. Click on **802.1X** tab
8. Click on **+** button
9. Click on **Add User Profile**



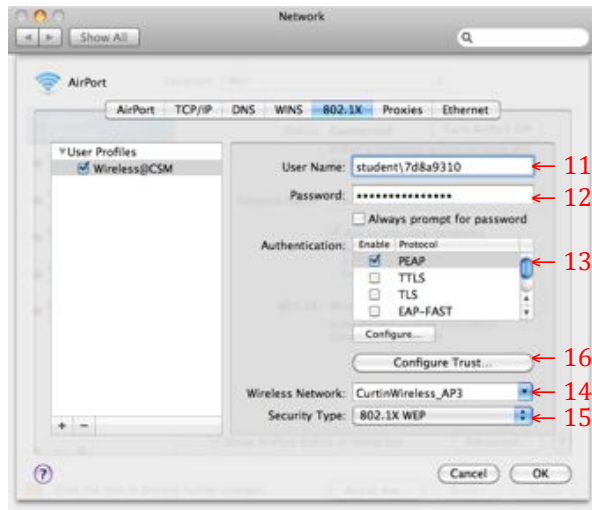
10. Rename **Untitled** to **<any name of your choice>** (e.g. *Wireless@CSM*)



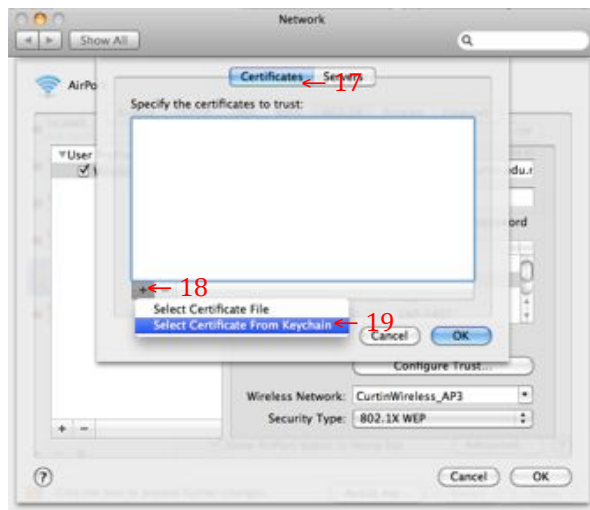
# How to Connect to Curtin's Wireless Network (Mac OS X 10.6.2 – Snow Leopard)



11. Enter **User Name** in the format of *student\ + <your student id>* (e.g. *student\7d8a9310*)
12. Enter **Password** as *<your windows account password>* (i.e. the same password used in computer lab)
13. Tick only **PEAP** protocol
14. Select *<the currently best available SSID detected>* for **Wireless Network** (e.g. *CurtinWireless\_AP3*)
15. Select **802.1X WEP** for **Security Type**
16. Click on **Configure Trust...** button



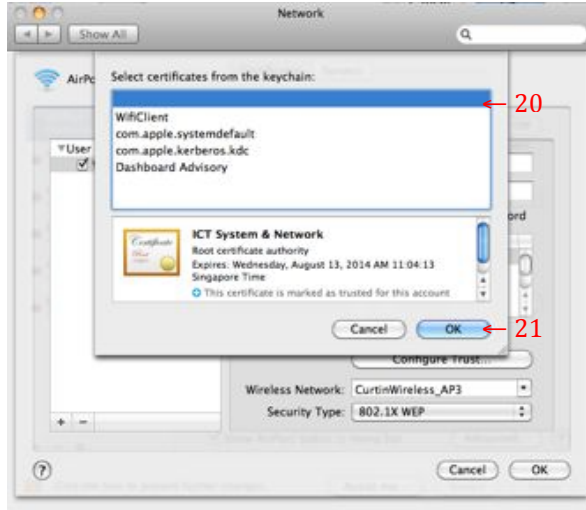
17. Click on **Certificates** tab
18. Click on **+** button
19. Click on **Select Certificate From Keychain** (i.e. the certificates must be installed beforehand)



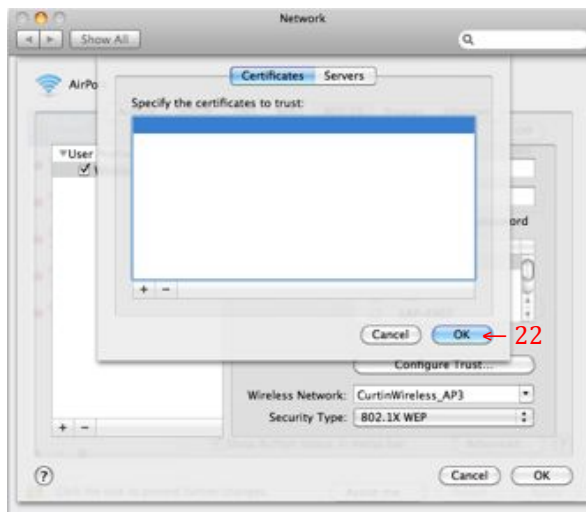
# How to Connect to Curtin's Wireless Network (Mac OS X 10.6.2 – Snow Leopard)



20. Select **<blank description>** for **Select certificate from the keychain** (Important: *ICT System & Network* **MUST** be shown)
21. Click on **OK** button



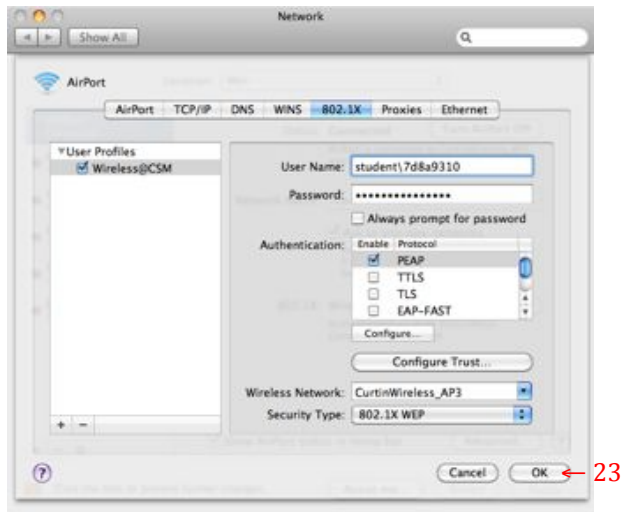
22. Click on **OK** button



# How to Connect to Curtin's Wireless Network (Mac OS X 10.6.2 – Snow Leopard)

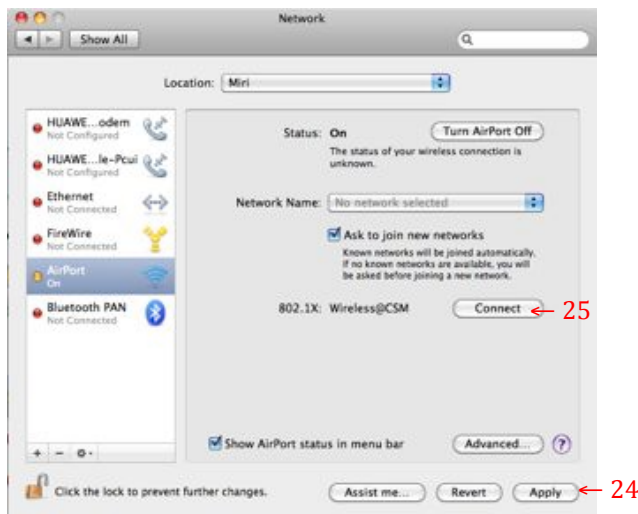


23. Click on **OK** button



24. Click on **Apply** button

25. Click on **Connect** button (i.e. the name shown here is identical to the name you have chosen in *Step 10*)



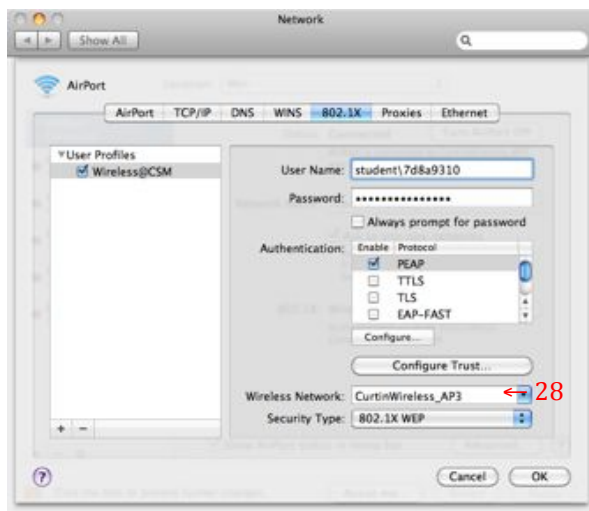
# How to Connect to Curtin's Wireless Network (Mac OS X 10.6.2 – Snow Leopard)



26. Once connected, the status will show **Authenticated via PEAP (MSCHAPv2)**
27. Click on **Disconnect** button to disconnect



28. Repeat **Step 14** and **Step 23 to Step 27** when the selected Wireless Network (e.g. CurtinWireless\_AP3) is not detectable within your current location in campus



## NOTE:

- 1) To access the Internet through Curtin's wireless network, you **MUST** remember to setup your browser's web proxy to **proxy.curtin.edu.my:8080**
- 2) When accessing non-Curtin's network (e.g. deConnexion, Streamyx, Celcom Broadband etc.), you **MUST** remember to remove the above proxy setting as it may interfere with your Internet connection settings

You may find more information on how to setup the web proxy for each of your browser through Google or any respectable search engines

## DISCLAIMER:

The above guide is only a reference for setup on Mac OS X version 10.6.2 as of 8<sup>th</sup> February 2010. Settings may vary according to different OS version.